

(DORRL2.DORRL) 24081
DORRL TWO DEPARTURE (RNAV)

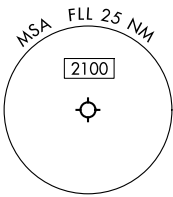
AL-744 (FAA)
FORT LAUDERDALE/HOLLYWOOD INTL (FLL)
FORT LAUDERDALE, FLORIDA

RNAV 1 - DME/DME/IRU or GPS.
RADAR required.

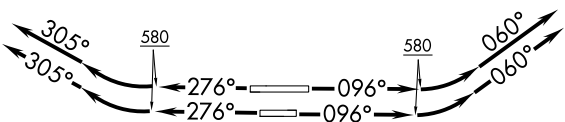
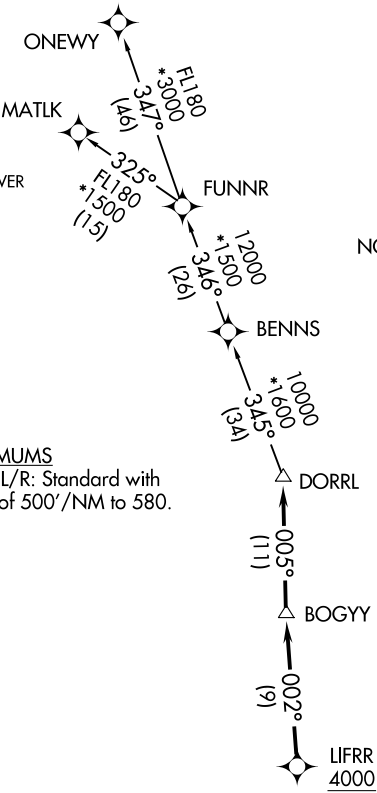
TOP ALTITUDE:
ASSIGNED BY ATC

NOTE: For turbo-props/props filed at or above 13000.

TAKEOFF MINIMUMS
Rwys 10L/R, 28L/R: Standard with minimum climb of 500'/NM to 580.



NOTE: Chart not to scale.



DEPARTURE ROUTE DESCRIPTION
SEE ADDITIONAL REQUIREMENTS ON AAUP

TAKEOFF RUNWAYS 10L/R: Climb on heading 096° to 580, then climbing left turn heading 060° or as assigned by ATC for vectors to cross LIFRR at or above 4000, thence. . .
TAKEOFF RUNWAYS 28L/R: Climb on heading 276° to 580, then climbing right turn heading 305° or as assigned by ATC for vectors to cross LIFRR at or above 4000, thence. . .
. . . on track 002° to BOGY, then on track 005° to DORRL then on (transition), maintain altitude as assigned by ATC, expect filed altitude 10 minutes after departure.

MATLK TRANSITION (DORRL2.MATLK)
ONEWY TRANSITION (DORRL2.ONEWY)

DORRL TWO DEPARTURE (RNAV)
(DORRL2.DORRL) 21MAR24

FORT LAUDERDALE, FLORIDA
FORT LAUDERDALE/HOLLYWOOD INTL (FLL)

SE-3, 10 JUL 2025 to 07 AUG 2025

SE-3, 10 JUL 2025 to 07 AUG 2025