

WAAS CH <b>49125</b> <b>W22A</b>	APP CRS <b>215°</b>	Rwy Idg TDZE Apt Elev	<b>5658</b> <b>2355</b> <b>2380</b>
--	------------------------	-----------------------------	---

# RNAV (GPS) RWY 22

AVENGER FLD (SWW)

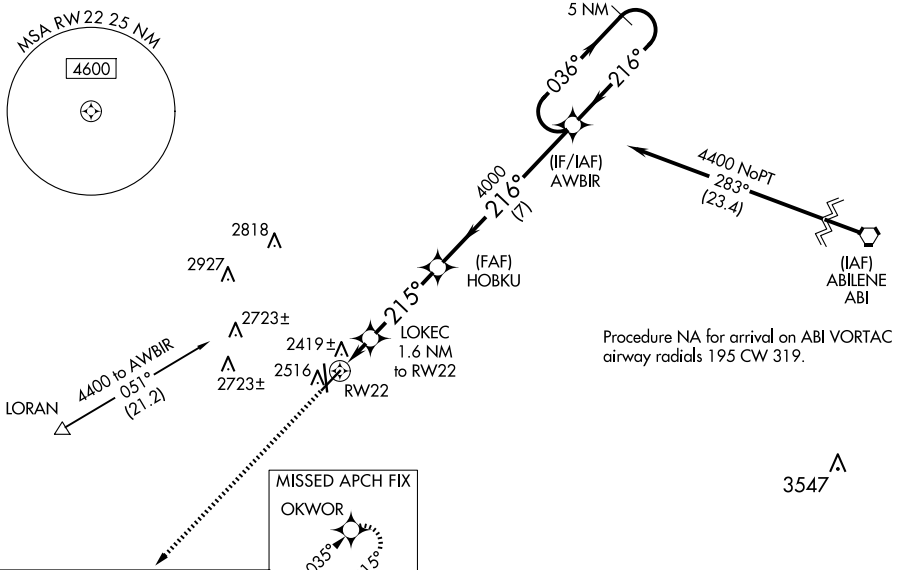
**⚠** When VGSi inop, Circling Rwy 17 and 22 NA at night. Baro-VNAV NA when using Snyder altimeter setting. For uncompensated Baro-VNAV systems, LNAV/VNAV NA below -19°C (-2°F) or above 29°C (84°F). When VGSi inop, Straight in/Circling Rwy 22 procedure NA at night. DME/DME RNP-0.3 NA. Visibility reduction by helicopters NA. When local altimeter setting not received, use Snyder altimeter setting and increase LPV and LNAV/VNAV DA to 2677 feet, increase all MDAs 80 feet; increase LPV and LNAV/VNAV visibility all Cats 1/8 SM, LNAV visibility Cats C and D and Circling Cat C and D visibility 1/4 SM.

**MISSED APPROACH:**  
Climb to 4400 direct OKWOR and hold.

AWOS-3  
**119.025**

ABILENE APP CON  
**127.2 282.3**

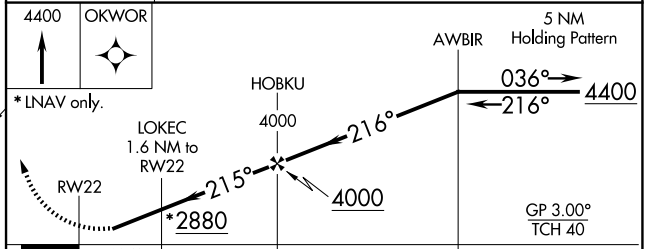
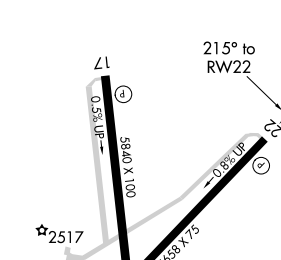
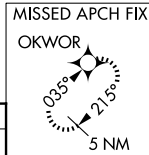
UNICOM  
**122.8 (CTAF)**



SC-2, 10 JUL 2025 to 07 AUG 2025

SC-2, 10 JUL 2025 to 07 AUG 2025

ELEV 2380 TDZE 2355



CATEGORY	A	B	C	D
LPV DA		2605-1	250 (300-1)	
LNAV/VNAV DA		2605-1	250 (300-1)	
LNAV MDA		2680-1	325 (300-1)	
CIRCLING	2880-1	500 (500-1)	3080-2 700 (700-2)	3080-2 1/4 700 (700-2 1/4)

REIL Rwy 17-35  
MIRL Rwy 4-22 and 17-35