

WAAS CH <b>70435</b> <b>W22A</b>	APP CRS <b>222°</b>	Rwy Idg TDZE Apt Elev	<b>6900</b> <b>152</b> <b>158</b>
--	------------------------	-----------------------------	---

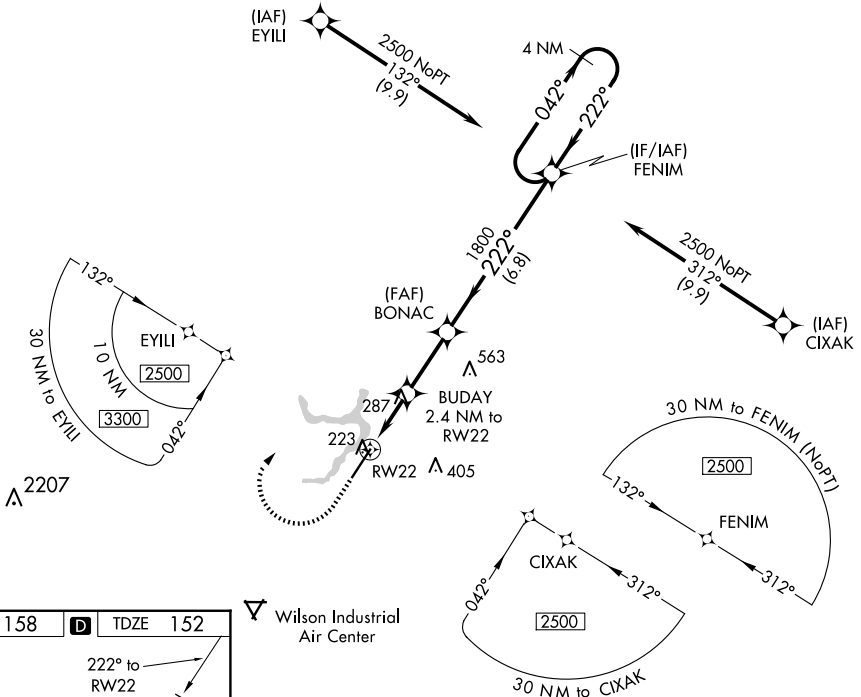
# RNAV (GPS) RWY 22

ROCKY MOUNT/WILSON RGNL (R.WI)

**⚠** For uncompensated Baro-VNAV systems, LNAV/VNAV NA below -10°C (14°F) or above 54°C (130°F). DME/DME RNP-0.3 NA. Baro-VNAV and VDP NA when using Wayne Exec Jetport altimeter setting. When local altimeter setting not received, use Wayne Exec Jetport altimeter setting and increase all DA 59 feet and all visibilities ¼ mile; increase all MDA 60 feet and LNAV Cats C/D and Circling Cat C visibility ¼ mile. Rwy 22 helicopter visibility reduction below ¾ SM NA.

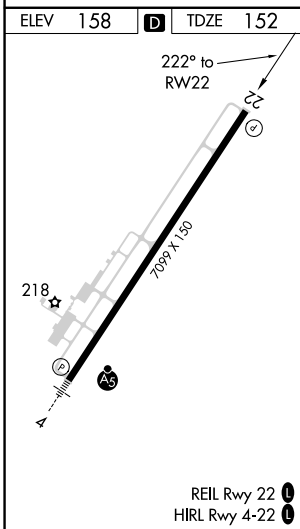
**MISSED APPROACH:** Climb to 1000 then climbing right turn to 2500 direct FENIM and hold.

ASOS <b>118.875</b>	WASHINGTON CENTER <b>123.85 279.65</b>	UNICOM <b>123.05 (CTAF) 0</b>
------------------------	---	----------------------------------

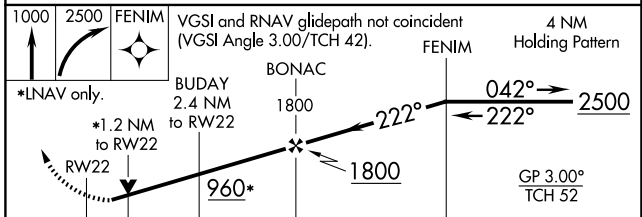


SE-2, 10 JUL 2025 to 07 AUG 2025

SE-2, 10 JUL 2025 to 07 AUG 2025



**⚠** Wilson Industrial Air Center



CATEGORY	A	B	C	D
LPV DA		436-7/8 284 (300-7/8)		
LNAV/VNAV DA		513-1 361 (400-1 1/8)		
LNAV MDA	560-1 408 (500-1)		560-1 1/8 408 (500-1 1/8)	
<b>C</b> CIRCLING	600-1 442 (500-1)	620-1 462 (500-1)	720-1 1/2 562 (600-1 1/2)	760-2 602 (700-2)