

WAAS CH 63027 W36A	APP CRS 360°	Rwy Idg TDZE 1324 Apt Elev 1326	4501
--	------------------------	---	-------------

RNAV (GPS) RWY 36

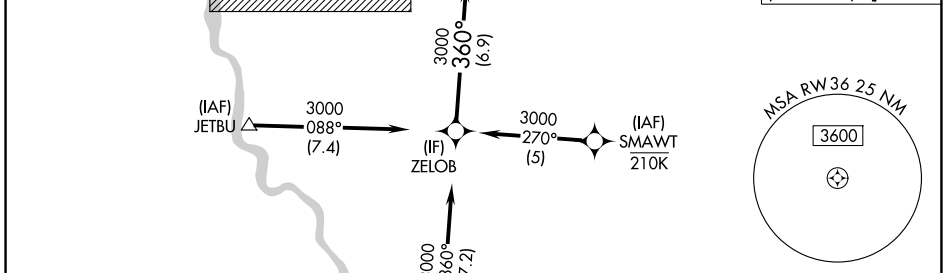
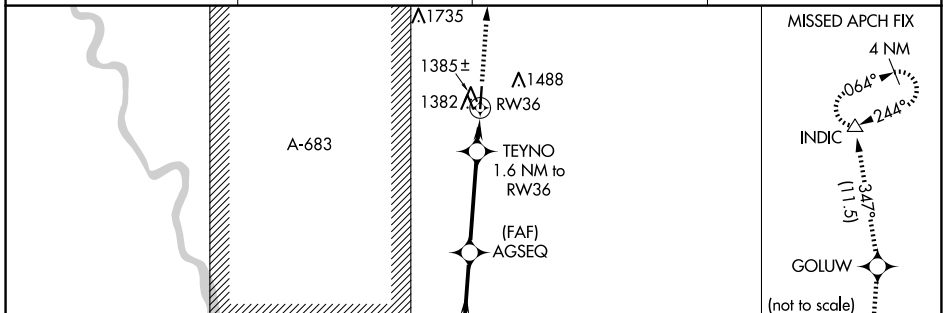
AUGUSTA MUNI (3AU)

RNP APCH - GPS.

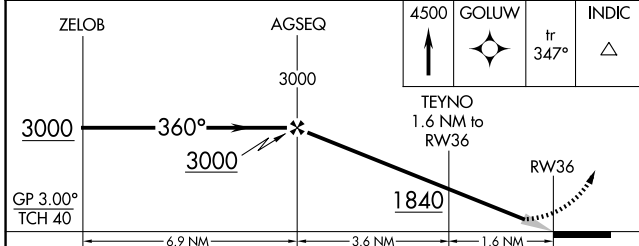
⚠ For uncompensated Baro-VNAV systems, LNAV/VNAV NA below -17°C or above 54°C. Baro-VNAV NA when using AAO altimeter setting. When local altimeter setting not received, use AAO altimeter setting and increase LPV DA to 1557 feet; increase LNAV/VNAV DA to 1607 feet. Increase all MDAs 40 feet and LNAV visibility Cat C ½ SM.

MISSED APPROACH: Climb to 4500 direct GOLUW and on track 347° to INDIC and hold.

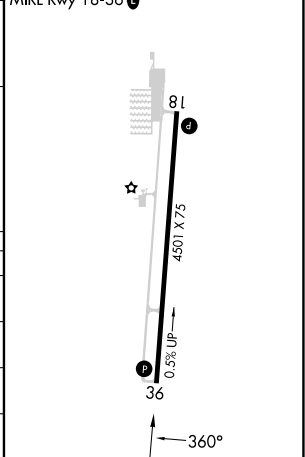
AWOS-3P 124.175	WICHITA APP CON 134.8 269.1	CLNC DEL 125.0	UNICOM 122.8 (CTAF)
---------------------------	---------------------------------------	--------------------------	-------------------------------



2563	ELEV 1326	TDZE 1324
	REIL Rwys 18 and 36	
	MIRL Rwy 18-36	



CATEGORY	A	B	C	D
LPV DA		1524-1 200 (200-1)		NA
LNAV/VNAV DA		1574-1 250 (300-1)		NA
LNAV MDA		1700-1 376 (400-1)		NA
C CIRCLING	1800-1 474 (500-1)	1820-1 494 (500-1)	1820-1½ 494 (500-1½)	NA



NC-2, 10 JUL 2025 to 07 AUG 2025

NC-2, 10 JUL 2025 to 07 AUG 2025