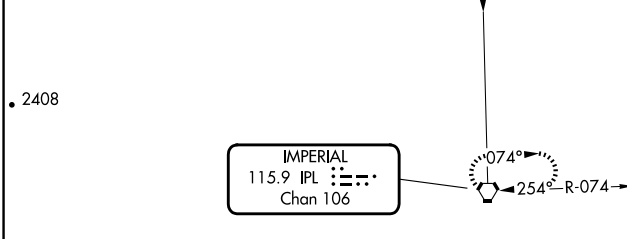
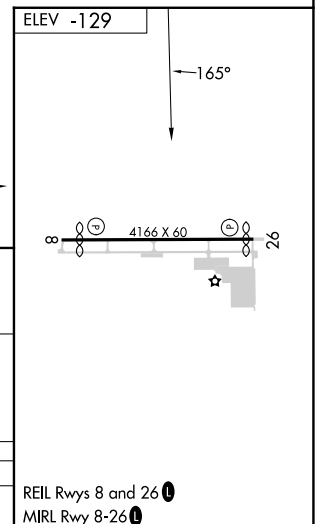
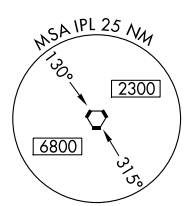
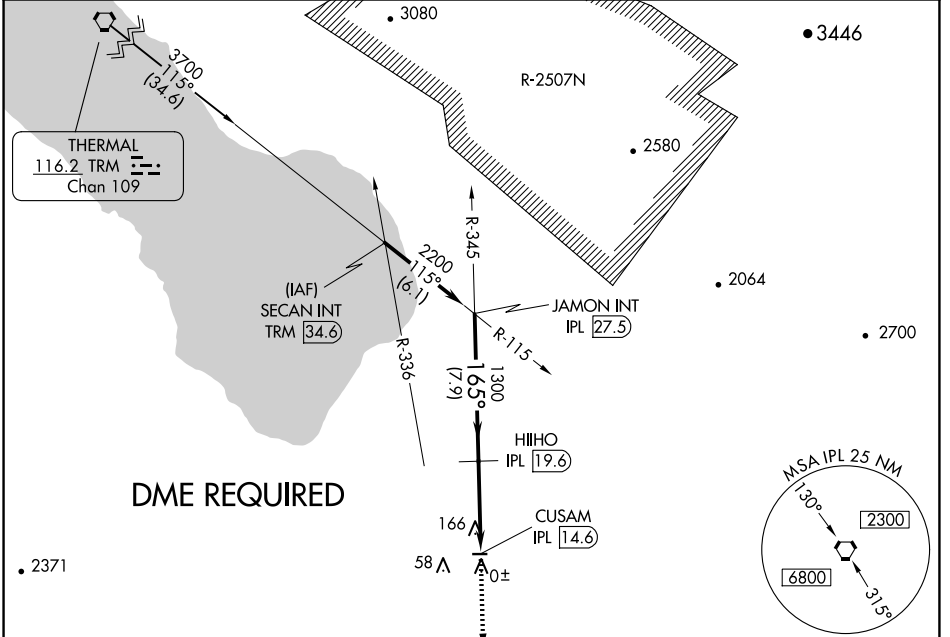


VORTAC IPL 115.9 Chan 106	APP CRS 165°	Rwy Idg TDZE Apt Elev	N/A N/A -129
---	------------------------	-----------------------------	---

VOR-B
BRAWLEY MUNI (BWC)

<p>▼ Use Imperial County altimeter setting. DME Required.</p> <p>▲ NA Circling Rwy 8 NA at night.</p>	MISSED APPROACH: Climb to 3000 direct IPL VORTAC and hold.
---	--

IPL ASOS 132.175	YUMA CERAP 128.55 292.2	CTAF 122.9
----------------------------	-----------------------------------	----------------------



JAMON INT IPL (27.5)	HIIHO IPL (19.6)	CUSAM IPL (14.6)		
2200	1300	3000		
Procedure Turn NA		IPL		
7.9 NM		5 NM		
CATEGORY	A	B	C	D
CIRCLING	560-1 689 (700-1)		NA	

SW-3, 10 JUL 2025 to 07 AUG 2025

SW-3, 10 JUL 2025 to 07 AUG 2025

REIL Rwys 8 and 26
MIRL Rwy 8-26