

(OPTEC1.OPTEC) 23110

OPTEC ONE DEPARTURE (RNAV)

AL-9858 (FAA)

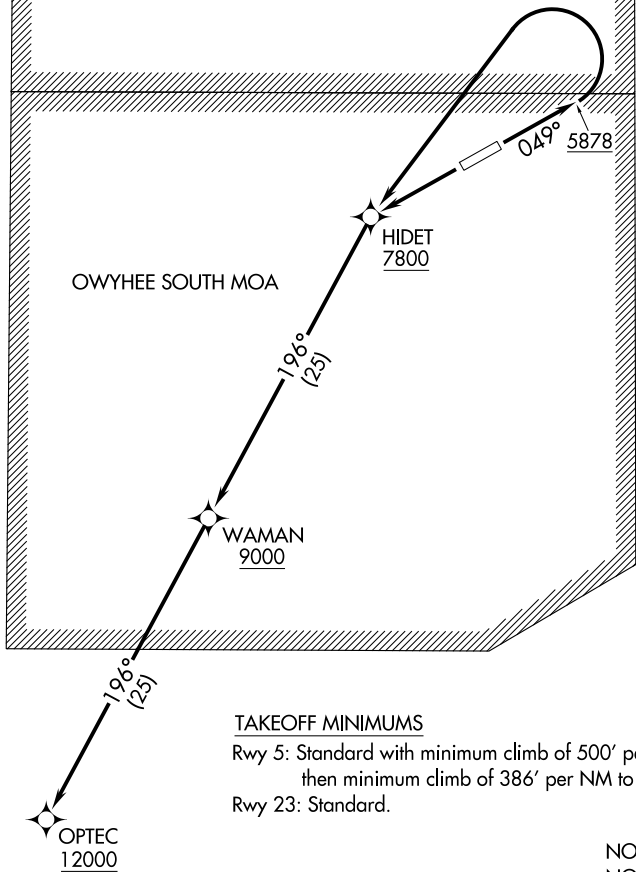
OWYHEE (10U)
OWYHEE, NEVADA

SALT LAKE CENTER
118.05 363.0
AWOS-3PT
118.525
CTAF
122.9

**TOP ALTITUDE:
12000**

OWYHEE NORTH MOA

OWYHEE SOUTH MOA



TAKEOFF MINIMUMS

Rwy 5: Standard with minimum climb of 500' per NM to 5878, then minimum climb of 386' per NM to 7500.

Rwy 23: Standard.

NOTE: GPS required.

NOTE: RNAV 1.

NOTE: Chart not to scale.



DEPARTURE ROUTE DESCRIPTION

TAKEOFF RUNWAY 5: Climb on heading 049° to 5878, then climbing left turn direct HIDE T, cross HIDE T at or above 7800, thence. . . .

TAKEOFF RUNWAY 23: Climb direct HIDE T, cross HIDE T at or above 7800, thence. . . .

. . . .climbing left turn on track 196° to cross WAMAN at or above 9000, then climb on track 196° to cross OPTEC at or above 12000.

OPTEC ONE DEPARTURE (RNAV)

(OPTEC1.OPTEC) 17JUN21

OWYHEE, NEVADA
OWYHEE (10U)

SW-4, 10 JUL 2025 to 07 AUG 2025

SW-4, 10 JUL 2025 to 07 AUG 2025