

COLUMBUS, MISSISSIPPI

VOR/DME A

VORTAC CBM 115.2 Chan 99	APCH CRS 090°	Rwy Ildg TDZE Arprt Elev N/A N/A 218
----------------------------------------------	-------------------------	-----------------------------------------------------------------------

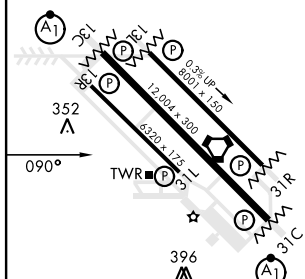
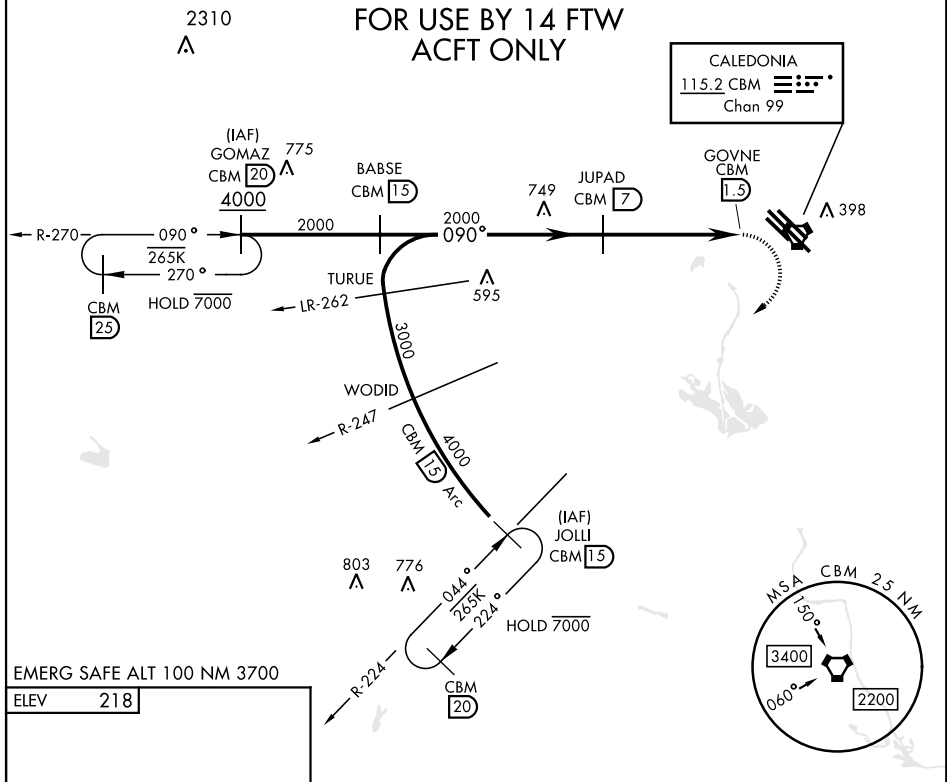
[USAF]

COLUMBUS AFB (KCBM)

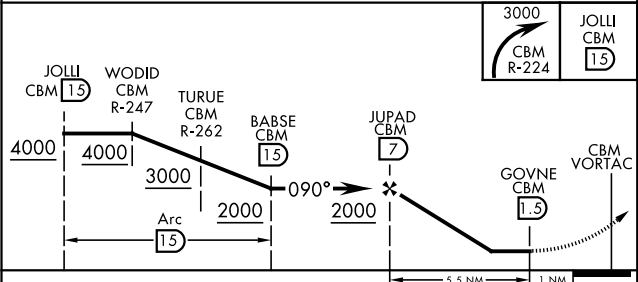
▼ When circling to Rwy 31R at night, operational VGSI required, remain on or above VGSI glidepath until threshold.

MISSED APPROACH: Climbing right turn to intercept the CBM R-224 outbound to JOLLI (CBM R-224/15) and hold. Maintain 3000.

ATIS ★ 115.2 273.5	APP CON ★ 134.55 350.3 (SE) 135.6 323.275 (SW) 126.075 239.25 (N)	TOWER ★ 126.65 379.925	GND CON ★ 121.9 275.8	CLNC DEL ★ 269.55
------------------------------	-------------------------------------------------------------------------------------------------	----------------------------------	---------------------------------	-----------------------------



MIRL Rwy 13R-31L
HIRL Rwy 13C-31C, 13L-31R



CATEGORY	A	B	C
C CIRCLING	760-1	542 (600-1)	760-1½ 542 (600-1½)

COLUMBUS, MISSISSIPPI
Amdt 6 21APR22

33°39'N-88°27'W

COLUMBUS AFB (KCBM)

VOR/DME A

SC-4, 07 AUG 2025 to 04 SEP 2025

SC-4, 07 AUG 2025 to 04 SEP 2025