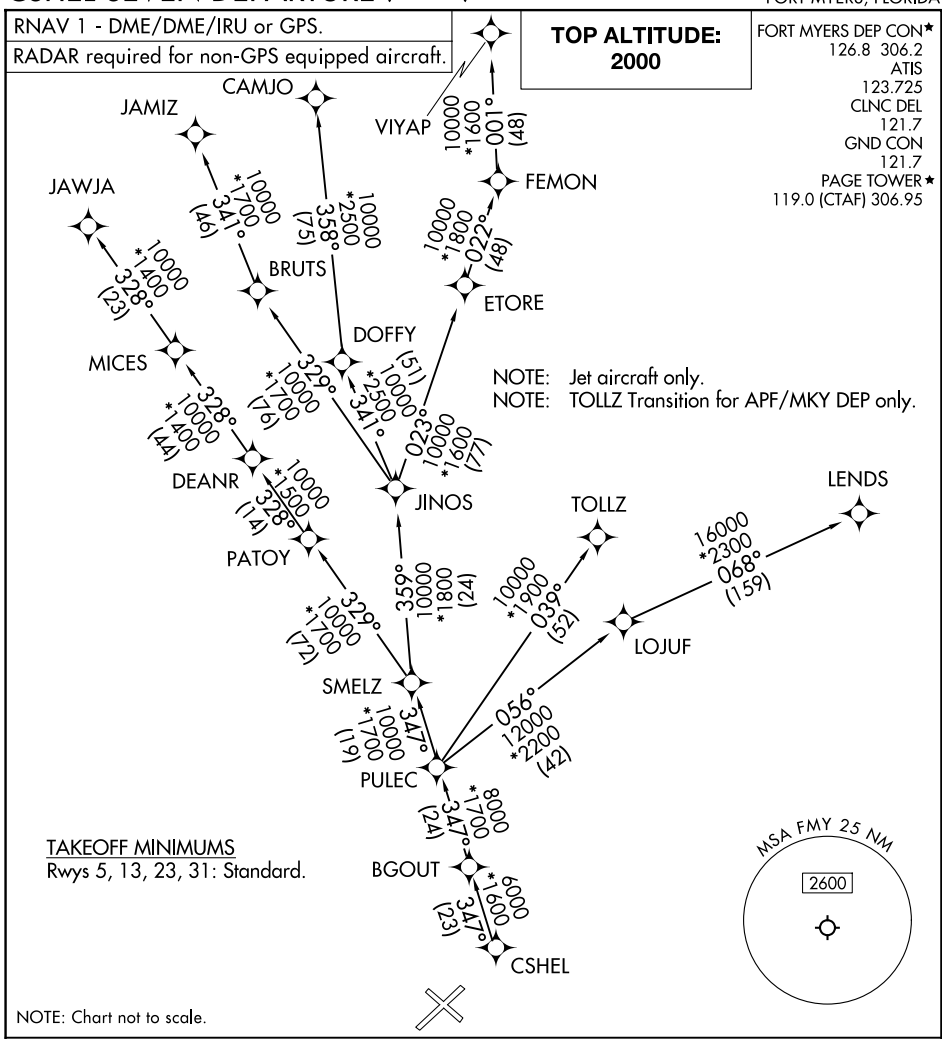


CSHEL SEVEN DEPARTURE (RNAV)



SE-3, 07 AUG 2025 to 04 SEP 2025

SE-3, 07 AUG 2025 to 04 SEP 2025

DEPARTURE ROUTE DESCRIPTION

TAKEOFF RUNWAYS 5, 13, 23, 31: Climb on assigned heading for RADAR vectors to CSHEL, thence...

... on assigned transition. Maintain 2000. Expect clearance to filed altitude within 10 minutes after departure.

CAMJO TRANSITION (CSHEL7.CAMJO)

JAMIZ TRANSITION (CSHEL7.JAMIZ)

JAWJA TRANSITION (CSHEL7.JAWJA)

LENDZ TRANSITION (CSHEL7.LENDZ)

TOLLZ TRANSITION (CSHEL7.TOLLZ)

VIYAP TRANSITION (CSHEL7.VIYAP)

CSHEL SEVEN DEPARTURE (RNAV)