

LOC I-FMY 110.7	APP CRS 051°	Rwy Ldg 5545 TDZE 15 Apt Elev 17
---------------------------	------------------------	---

ILS or LOC RWY 5

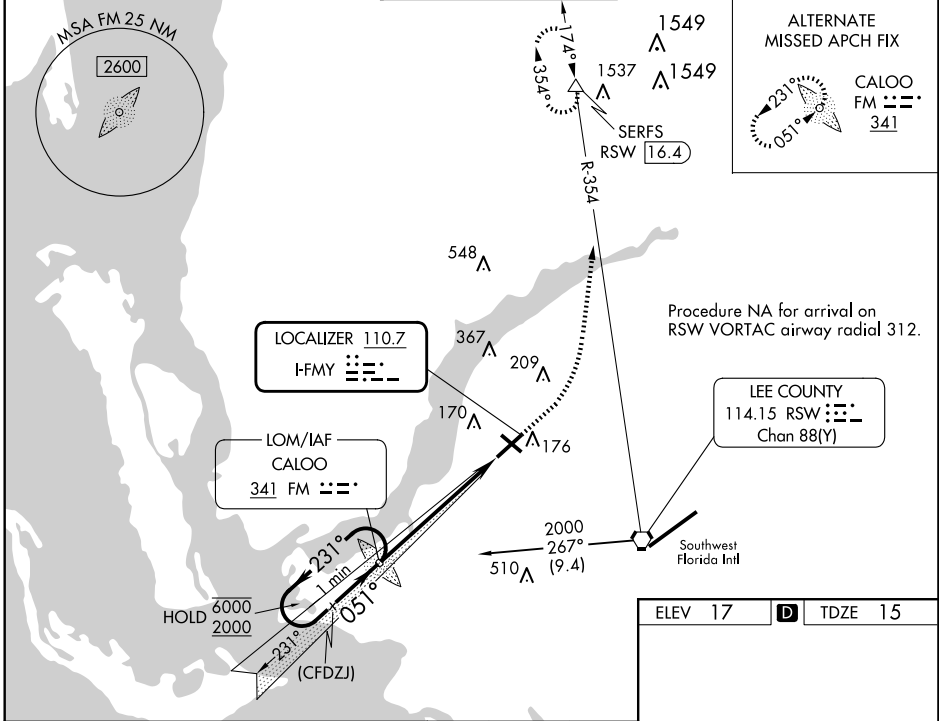
PAGE FLD (FMY)

ADF or RADAR required for procedure entry. ADF required for LOC only.
DME Required.

⚠ Rwy 5 helicopter visibility reduction below $\frac{3}{4}$ SM NA. When Circling to Rwy 31 at night, operational VGSI required, remain on or above VGSI glidepath until threshold.

MISSED APPROACH: Climb to 1000 then climbing left turn to 2600 on RSW VORTAC R-354 to SERFS/RSW 16.4 DME and hold.

ATIS 123.725	FORT MYERS APP CON ★ 125.15 306.2 (Rwys 5, 13) 126.8 306.2 (Rwys 23, 31)	PAGE TOWER ★ 119.0 (CTAF) 306.95	GND CON 121.7	CLNC DEL 121.7
------------------------	--	---	-------------------------	--------------------------



ALTERNATE MISSED APCH FIX

CALOO FM 341

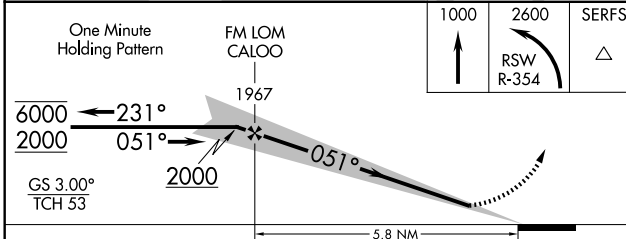
LEE COUNTY
114.15 RSW
Chan 88(Y)

ELEV 17	D	TDZE 15
---------	----------	---------

REIL Rwys 5, 13, 23 and 31
MIRL Rwy 5-23 and 13-31

FAF to MAP 5.8 NM

Knots	60	90	120	150	180
Min:Sec	5:48	3:52	2:54	2:19	1:56



CATEGORY	A	B	C	D
S-ILS 5	265-1		250 (300-1)	
S-LOC 5	460-1	445 (500-1)	460-1 $\frac{3}{8}$	445 (500-1 $\frac{3}{8}$)
C CIRCLING	540-1	523 (600-1)	600-1 $\frac{1}{2}$ 583 (600-1 $\frac{1}{2}$)	680-2 663 (700-2)

SE-3, 07 AUG 2025 to 04 SEP 2025

SE-3, 07 AUG 2025 to 04 SEP 2025