

WAAS CH <b>69424</b> <b>W23A</b>	APP CRS <b>231°</b>	Rwy Ldg TDZE <b>5545</b> <b>16</b>	Apt Elev <b>17</b>
--	------------------------	--	-----------------------

# RNAV (GPS) RWY 23

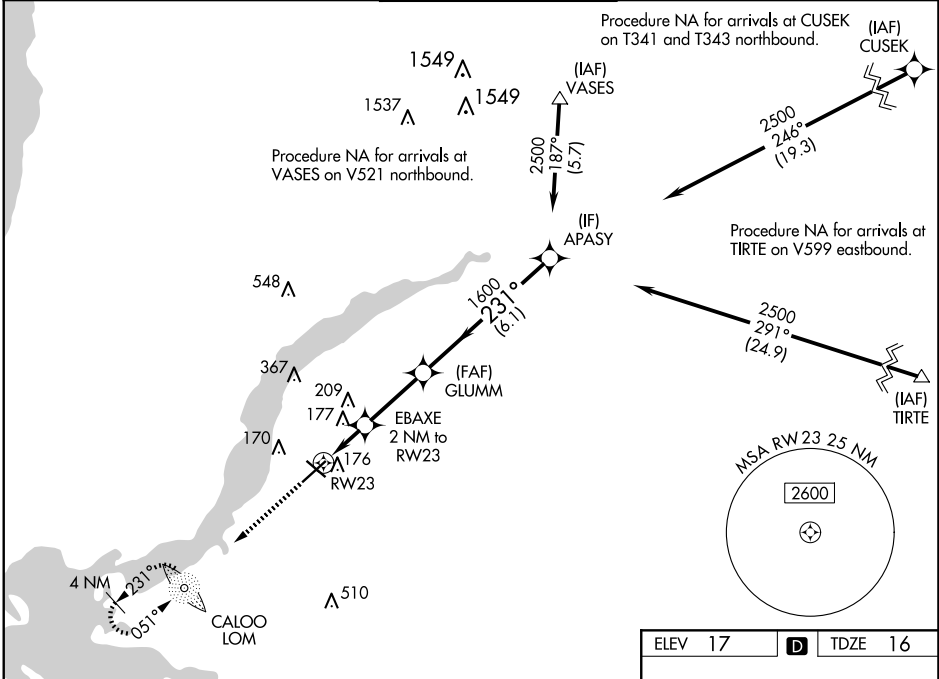
PAGE FLD (FMY)

RNP APCH - GPS.

**⚠** Rwy 23 helicopter visibility reduction below 3/4 SM NA. When Circling to Rwy 31 at night, operational VGSI required, remain on or above VGSI glidepath until threshold. For uncompensated Baro-VNAV systems, LNAV/VNAV NA below 5°C or above 54°C.

**MISSED APPROACH:** Climb to 2000 direct CALOO LOM and hold, continue climb-in-hold.

ATIS <b>123.725</b>	FORT MYERS APP CON ★ <b>125.15 306.2</b> (Rwys 5, 13) <b>126.8 306.2</b> (Rwys 23, 31)	PAGE TOWER ★ <b>119.0</b> (CTAF) <b>0 306.95</b>	GND CON <b>121.7</b>	CLNC DEL <b>121.7</b>
------------------------	--	---	-------------------------	--------------------------



SE-3, 07 AUG 2025 to 04 SEP 2025

SE-3, 07 AUG 2025 to 04 SEP 2025

2000	CALOO				
		EBAXE 2 NM to RW23	GLUMM 1600	APASY 2500	
		1.1 NM to RW23			
		700	1600	2500	GP 3.00° TCH 59
		1.1 NM	0.8 NM	2.8 NM	6.1 NM
CATEGORY		A	B	C	D
LPV DA		278-7/8		262 (300-7/8)	
LNAV/VNAV DA		392-1		376 (400-1)	
LNAV MDA		440-1	424 (500-1)	440-1 1/4	424 (500-1 1/4)
<b>C</b> CIRCLING		540-1	523 (600-1)	600-1 1/2	680-2 583 (600-1 1/2)

