

NANDR THREE DEPARTURE (RNAV)

AL-160 (FAA)

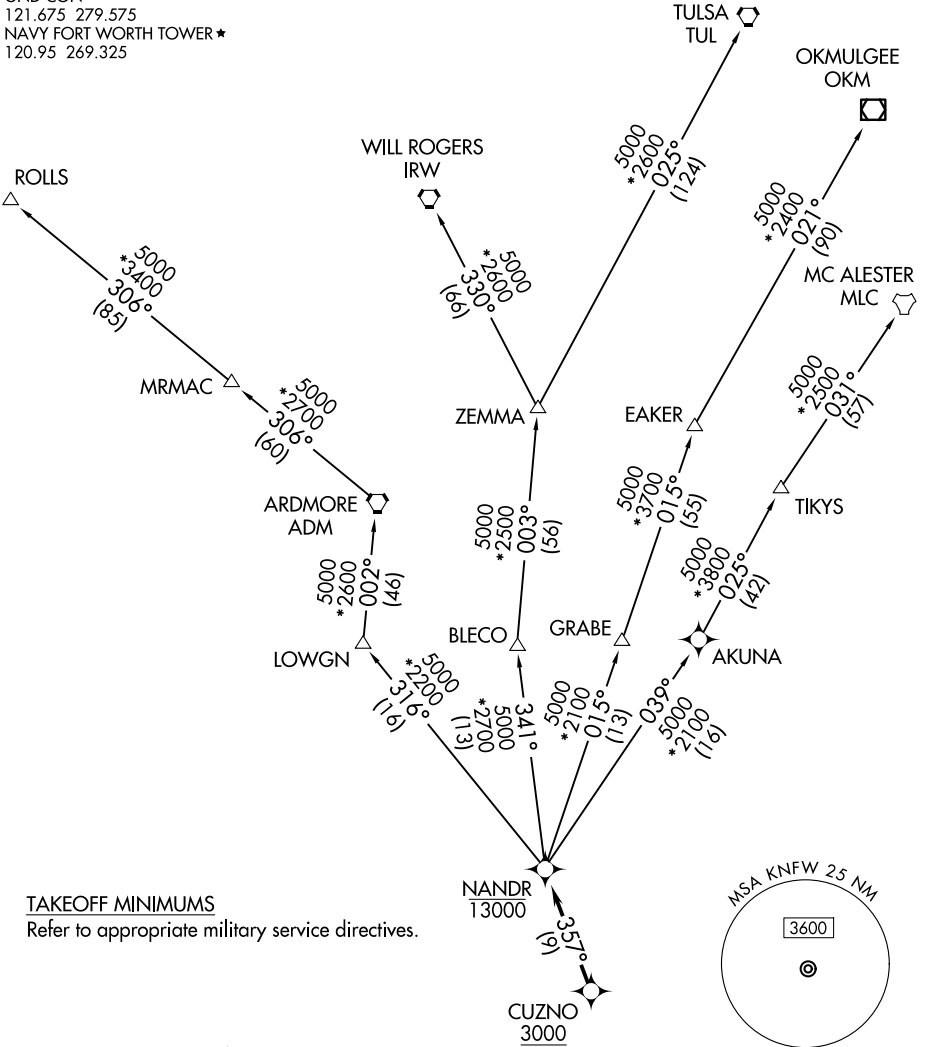
FORT WORTH, TEXAS

LONE STAR DEP CON
125.8 257.95
ATIS*
351.675
GND CON
121.675 279.575
NAVY FORT WORTH TOWER*
120.95 269.325

RNAV 1 - DME/DME/IRU or GPS.

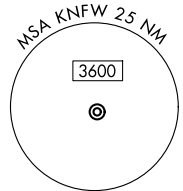
RADAR required.

**TOP ALTITUDE:
ASSIGNED BY ATC**



TAKEOFF MINIMUMS

Refer to appropriate military service directives.



NOTE: EAKER Transition: For TUL terminal arrivals only.
 NOTE: TULSA Transition: For all aircraft overflying TUL VORTAC.
 NOTE: Aircraft arriving to the Oklahoma City terminal area, file and expect the ZEMMA enroute transition.

NOTE: Chart note to scale.

(CONTINUED ON FOLLOWING PAGE)

NANDR THREE DEPARTURE (RNAV)

FORT WORTH, TEXAS

(NANDR3.NANDR) 17APR25

FORT WORTH NAS JRB (CARSWELL FLD)(KNFW)

SC-2, 07 AUG 2025 to 04 SEP 2025

SC-2, 07 AUG 2025 to 04 SEP 2025