

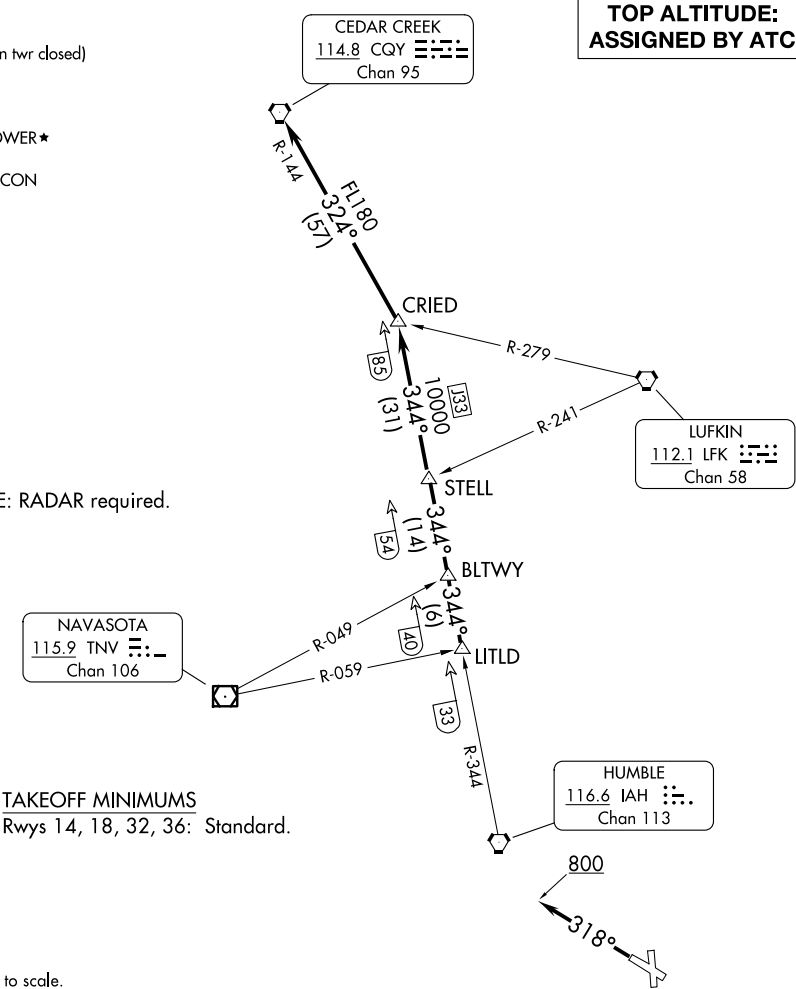
Cried One Departure

AL-164 (FAA)

ASOS  
123.95  
CLNC DEL (When twr closed)  
135.35  
GND CON  
118.625  
Galveston Tower ★  
120.575 (CTAF)  
Houston Dep Con  
134.45 284.0

TOP ALTITUDE:  
Assigned by ATC

NOTE: RADAR required.



TAKEOFF MINIMUMS  
Rwys 14, 18, 32, 36: Standard.

DEPARTURE ROUTE DESCRIPTION

**TAKEOFF RUNWAYS 14, 18, 36:** When entering controlled airspace, climb on assigned heading for RADAR vectors to LITLD INT. Maintain ATC assigned altitude. Expect filed altitude 10 minutes after departure, then . . . .

**TAKEOFF RUNWAY 32:** Climb on heading 318° to 800 before turning. When entering controlled airspace, climb on assigned heading for RADAR vectors to LITLD INT. Maintain ATC assigned altitude. Expect filed altitude 10 minutes after departure, then . . . .

. . . . on IAH R-344 to STELL INT, then on IAH R-344 to CRIED INT, then left turn on CQY R-144 to CQY VORTAC.

Cried One Departure