

WAAS CH <b>62830</b> <b>W14A</b>	APP CRS <b>137°</b>	Rwy Idg TDZE Apt Elev	<b>6236</b> <b>2608</b> <b>2613</b>
--	------------------------	-----------------------------	---

# RNAV (GPS) RWY 14

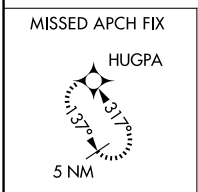
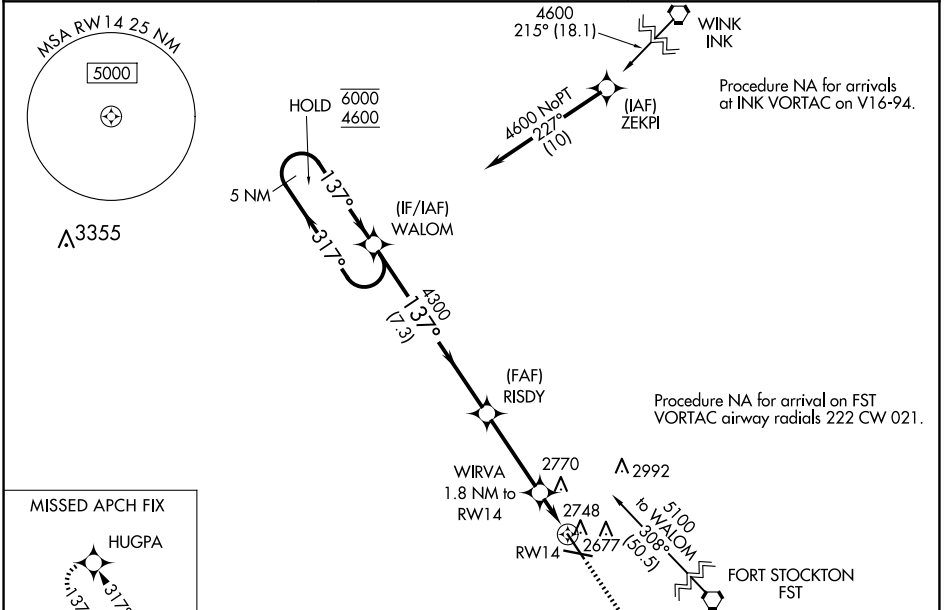
PECOS MUNI (PEQ)

RNP APCH - GPS.

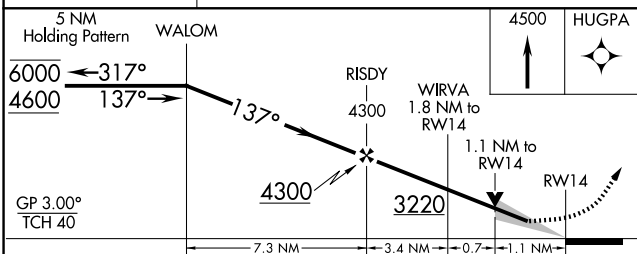
⚠ Circling Rwy 9, 27 NA at night. Baro-VNAV and VDP NA when using Wink altimeter setting. For uncompensated Baro-VNAV systems, LNAV/VNAV NA below -20°C or above 54°C. When local altimeter setting not received, use Wink altimeter setting and increase LPV DA to 2903 feet and all visibilities 1/8 SM. Increase LNAV/VNAV DA to 3004 feet and all visibilities 1/4 SM. Increase all MDAs 100 feet and LNAV visibility Cat C/D 1/4 SM, and Circling visibility Cat C/D 1/4 SM.

MISSED APPROACH:  
Climb to 4500 direct HUGPA and hold.

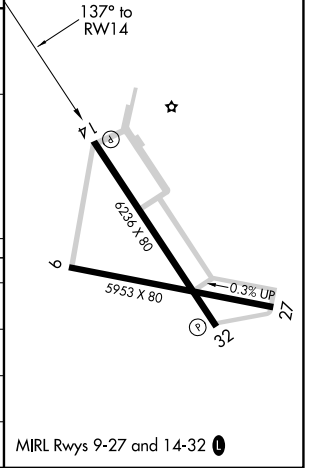
AWOS-3 <b>118.175</b>	ALBUQUERQUE CENTER <b>135.875 292.15</b>	UNICOM <b>122.8 (CTAF) 0</b>
--------------------------	---	---------------------------------



ELEV 2613	TDZE 2608
-----------	-----------



CATEGORY	A	B	C	D
LPV DA		2808-3/4	200 (200-3/4)	
LNAV/VNAV DA		2909-7/8	301 (300-7/8)	
LNAV MDA	3000-1	392 (400-1)	3000-1 1/8	392 (400-1 1/8)
CIRCLING	3060-1 447 (500-1)	3140-1 527 (600-1)	3360-2 1/4 747 (800-2 1/4)	3360-2 1/2 747 (800-2 1/2)



SC-3, 07 AUG 2025 to 04 SEP 2025

SC-3, 07 AUG 2025 to 04 SEP 2025

MIRL Rwy 9-27 and 14-32 0