

ALWAYS THREE ARRIVAL (RNAV)

AL-375 (FAA)

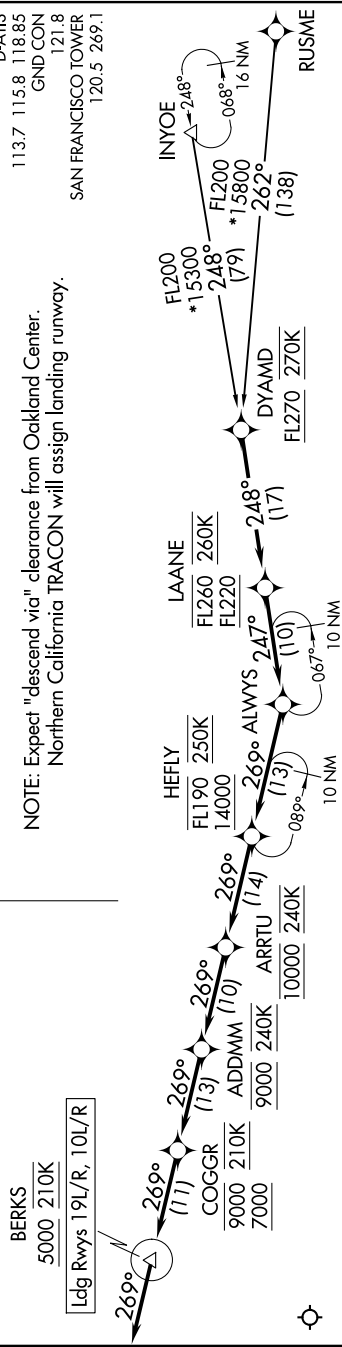
SAN FRANCISCO INTL (SFO)
SAN FRANCISCO, CALIFORNIA

SW-2, 07 AUG 2025 to 04 SEP 2025

OAKLAND CENTER
134.37 281.5
NORCAL APP CON
128.325 254.3
D-AIIS
113.7 115.8 118.85
GND CON
121.8
SAN FRANCISCO TOWER
120.5 269.1

RNAV 1 - DME/DME/IRU or GPS.
RADAR required.

NOTE: Expect "descend via" clearance from Oakland Center.
Northern California TRACON will assign landing runway.



NOTE: Chart not to scale.

ARRIVAL ROUTE DESCRIPTION

INYOE TRANSITION (INYOE.ALWYS3)

RUSME TRANSITION (RUSME.ALWYS3)

From DYAMD on track 248° to cross LAANE between FL220 and FL260, then on track 247° to ALWAYS.

LANDING RUNWAYS 10L/R: From ALWAYS on track 269° to cross HEFLY between 14000 and FL190 and at 250K, then on track 269° to cross ARRTU at 10000 and at 240K, then on track 269° to cross ADDMM at 9000 and at 240K, then on track 269° to cross COGGR between 7000 and 9000 and at 210K, then on track 269° to cross BERKS at or above 5000 and at 210K, then on track 269° . Expect RADAR vectors to final approach course.

LANDING RUNWAYS 19L/R: From ALWAYS on track 269° to cross HEFLY between 14000 and FL190 and at 250K, then on track 269° to cross ARRTU at 10000 and at 240K, then on track 269° to cross ADDMM at 9000 and at 240K, then on track 269° to cross COGGR between 7000 and 9000 and at 210K, then on track 269° to cross BERKS at or above 5000 and at 210K, then on track 269° . Expect ILS or RNAV (GPS) approach to Rwy 19L, or RADAR vectors to final approach course.

SW-2, 07 AUG 2025 to 04 SEP 2025