

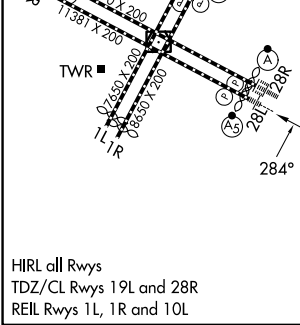
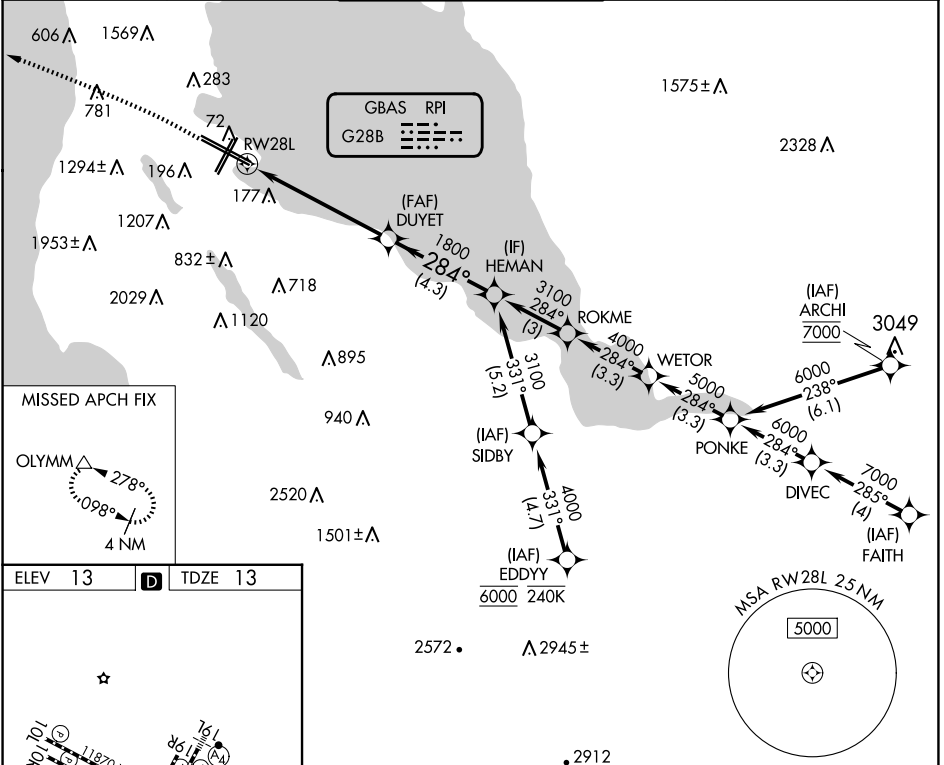
GBAS CH 21037 G28B	APP CRS 284°	Rwy Ldg 10275 TDZE 13 Apt Elev 13
---------------------------------	------------------------	--

GLS RWY 28L

SAN FRANCISCO INTL (SFO)

RNP APCH-GPS.	<p>MALSRL</p>	<p>MISSED APPROACH: Climb to 1020 then climbing left turn to 4000 direct OLYMM and hold.</p> <p>*Missed approach requires minimum climb of 330 feet per NM to 1600; if unable to meet climb gradient, see RNAV (GPS) Rwy 28L.</p>
<p>Simultaneous approach authorized. Simultaneous operations require use of vertical guidance; maintain last assigned altitude until established on glidepath. Use of FD or AP required during simultaneous operations. Autopilot coupled required NA below 213.</p> <p>*RVR 1800 authorized with use of FD or AP or HUD to DA.</p>		

D-ATIS 113.7 115.8 118.85	NORCAL APP CON 134.5 338.2	SAN FRANCISCO TOWER 120.5 269.1	GND CON 121.8	CLNC DEL 118.2	CPDLC
---	--------------------------------------	---	-------------------------	--------------------------	-------



1020	4000	OLYMM	<p>VGSI and GLS glidepath not coincident (VGSI Angle 2.85/TCH 67).</p>	
<p>HEMAN</p> <p>DUYET 1800</p> <p>RWY 28L</p> <p>3100</p> <p>284°</p> <p>1800</p> <p>5.7 NM</p> <p>4.3 NM</p> <p>GP 2.85° TCH 53</p>				
CATEGORY	A	B	C	D
GLS DA*	213/24		200 (200-1/2)	

SW-2, 07 AUG 2025 to 04 SEP 2025

SW-2, 07 AUG 2025 to 04 SEP 2025