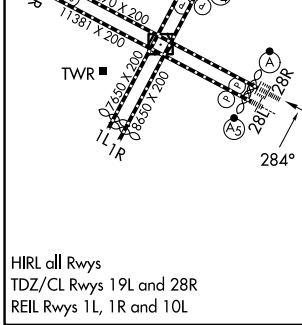
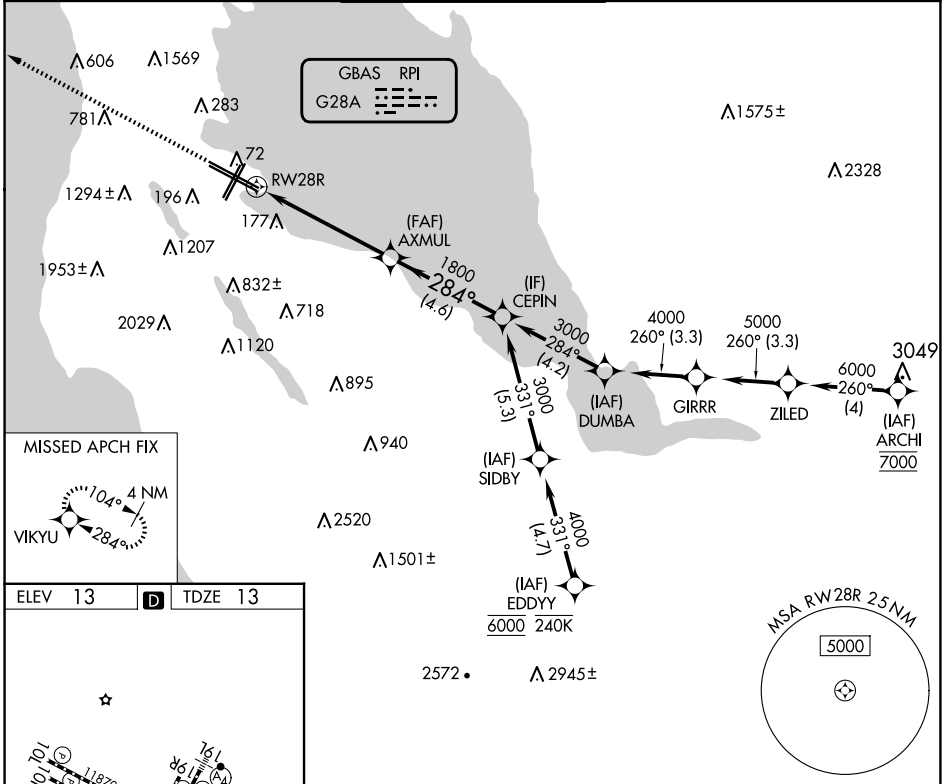


GBAS CH 20626 G28A	APP CRS 284°	Rwy Ldg 11236 TDZE 13 Apt Elev 13
--	------------------------	--

GLS RWY 28R

SAN FRANCISCO INTL (SFO)

RNP APCH-GPS.		ALSIF-2 	MISSED APPROACH: Climb to 3200 direct VIKYU and hold. *Missed approach requires minimum climb of 350 feet per NM to 1900; if unable to meet climb gradient, see RNAV (GPS) Z RWY 28R.				
<p>Simultaneous approach authorized. Simultaneous operations require use of vertical guidance; maintain last assigned altitude until established on glidepath. Use of FD or AP required during simultaneous operations. Autopilot coupled approach NA below 213 feet.</p> <p>NA</p>			D-ATIS 113.7 115.8 118.85	NORCAL APP CON 134.5 338.2	SAN FRANCISCO TOWER 120.5 269.1	GND CON 121.8	CLNC DEL 118.2



3200	VIKYU	VGSi and GLS glidepath not coincident (VGSi Angle 3.00/TCH 55).		CEPIN
↑		AXMUL	1800	3000
		RWY 28R	284°	1800
		5.4 NM	4.6 NM	GP 3.00° TCH 55
CATEGORY	A	B	C	D
GLS DA*	213/18 200 (200-1/2)			

SW-2, 07 AUG 2025 to 04 SEP 2025

SW-2, 07 AUG 2025 to 04 SEP 2025