

| | | |
|------------------------|-----------------------------|---|
| APP CRS 108° | Rwy Idg TDZE Apt Elev | N/A N/A 1375 |
|------------------------|-----------------------------|---|

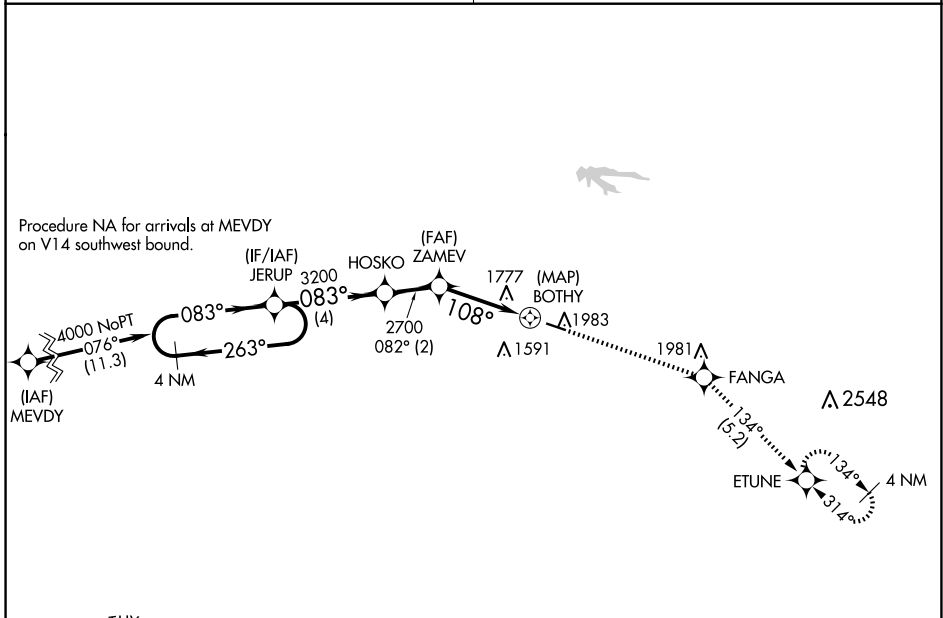
RNAV (GPS)-A DOWNTOWN (3DW)

NA Circling NA north of Rwy 11-29. DME/DME RNP-0.3 NA.
Use Springfield-Branson Ntl altimeter setting; when not received, use Branson West altimeter setting and increase all MDA 60 feet.
Procedure NA at night. Helicopter visibility reduction below 1 SM NA.

MISSED APPROACH: Climb to 4000 direct FANGA and track 134° to ETUNE and hold.

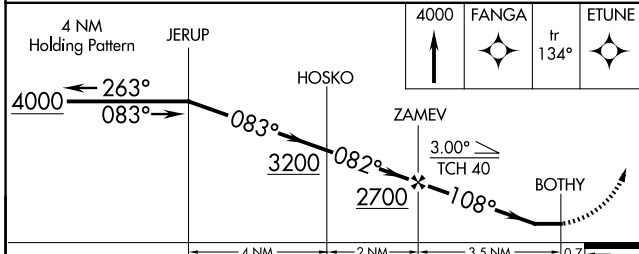
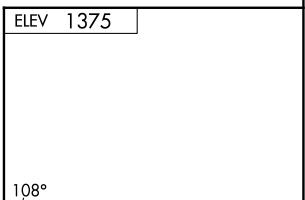
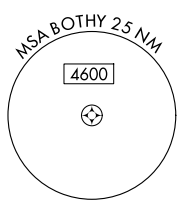
SPRINGFIELD APP CON
124.95 353.925

UNICOM
122.8 (CTAF) 0



NC-3, 07 AUG 2025 to 04 SEP 2025

NC-3, 07 AUG 2025 to 04 SEP 2025



| | | | | |
|-----------------|--------|-------------|----|---|
| CATEGORY | A | B | C | D |
| CIRCLING | 2060-1 | 685 (700-1) | NA | |

