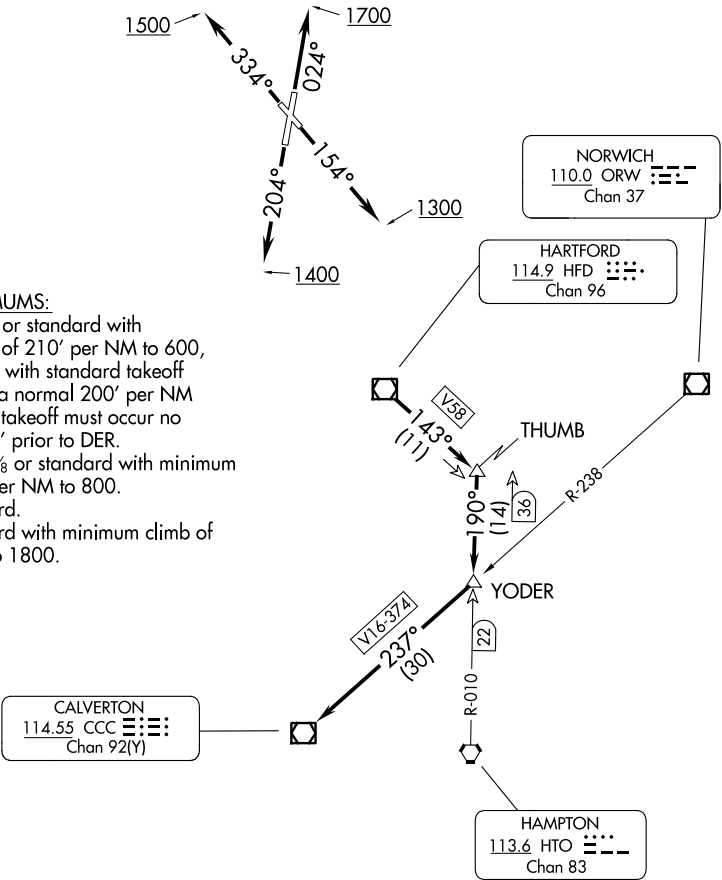


ATIS
127.1 263.15
GND CON
121.7 289.4
WESTFIELD TOWER ★
125.075 (CTAF) 251.1
YANKEE DEP CON
125.35 281.5

TOP ALTITUDE:
3000

TAKEOFF MINIMUMS:
Rwy 2: 200-1½ or standard with minimum climb of 210' per NM to 600, or alternatively, with standard takeoff minimums and a normal 200' per NM climb gradient, takeoff must occur no later than 1200' prior to DER.
Rwy 15: 400-1⅞ or standard with minimum climb of 460' per NM to 800.
Rwy 20: Standard.
Rwy 33: Standard with minimum climb of 340' per NM to 1800.



NOTE: RADAR required.
NOTE: Initial departure headings are predicated on avoiding noise sensitive areas, flight crew awareness and compliance is important in minimizing noise impacts on surrounding communities.

(NARRATIVE ON FOLLOWING PAGE)

NE-1, 07 AUG 2025 to 04 SEP 2025

NE-1, 07 AUG 2025 to 04 SEP 2025