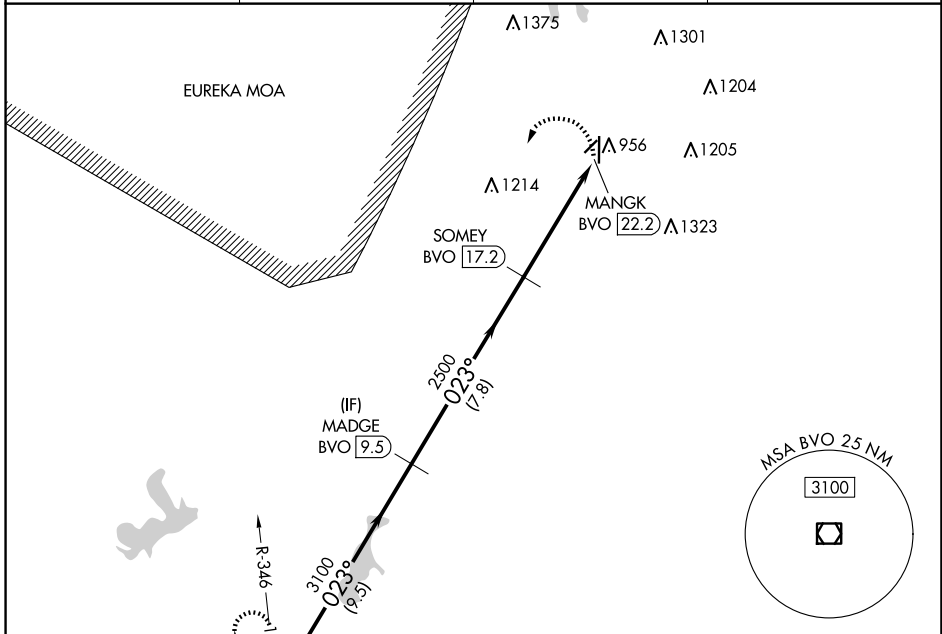


VOR/DME BVO 117.9 Chan 126	APP CRS 023°	Rwy Idg TDZE Apt Elev N/A N/A 825
--	------------------------	---

VOR-A
INDEPENDENCE MUNI (IDP)

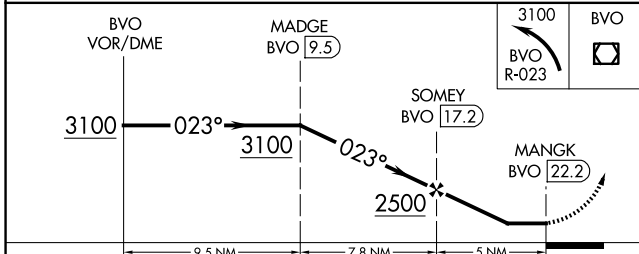
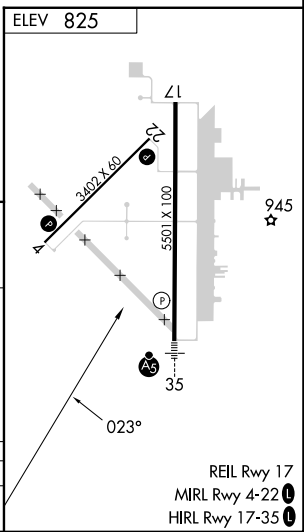
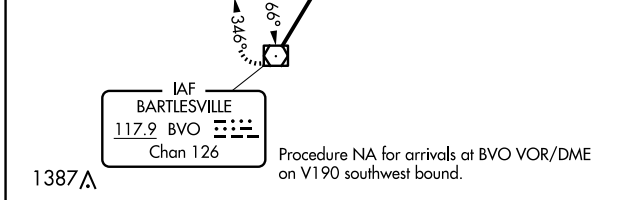
DME required.	MISSED APPROACH: Climbing left turn to 3100 on BVO VOR/DME R-023 to BVO VOR/DME and hold.
Circling Rwy 4, 22 NA at night.	

AWOS-3PT 118,525	KANSAS CITY CENTER 128.6 282,325	CLNC DEL 121.65	UNICOM 123,05 (CTAF) 0
----------------------------	--	---------------------------	----------------------------------



NC-2, 07 AUG 2025 to 04 SEP 2025

NC-2, 07 AUG 2025 to 04 SEP 2025



CATEGORY	A	B	C	D
CIRCLING	1420-1	595 (600-1)	1420-1½ 595 (600-1½)	1680-2¾ 855 (900-2¾)

REIL Rwy 17
MIRL Rwy 4-22 0
HIRL Rwy 17-35 0