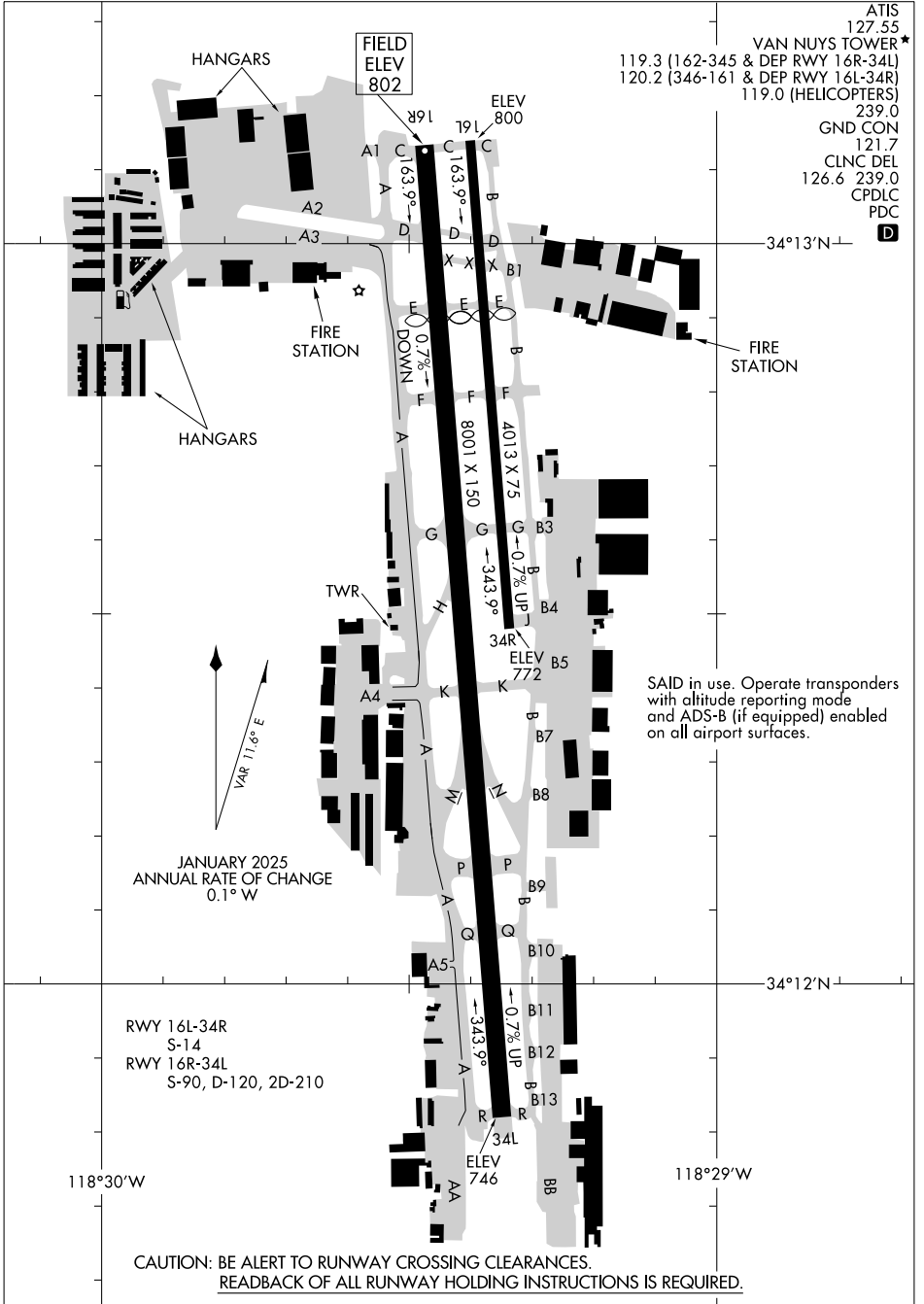


# AIRPORT DIAGRAM

AL-552 (FAA)

VAN NUYS (VNY)  
VAN NUYS, CALIFORNIA



ATIS 127.55  
 VAN NUYS TOWER\* 119.3 (162-345 & DEP RWY 16R-34L)  
 120.2 (346-161 & DEP RWY 16L-34R)  
 119.0 (HELICOPTERS)  
 GND CON 239.0  
 121.7  
 CLNC DEL 126.6 239.0  
 CPDLC  
 PDC

SAID in use. Operate transponders with altitude reporting mode and ADS-B (if equipped) enabled on all airport surfaces.

SW-3, 07 AUG 2025 to 04 SEP 2025

SW-3, 07 AUG 2025 to 04 SEP 2025

CAUTION: BE ALERT TO RUNWAY CROSSING CLEARANCES.  
 READBACK OF ALL RUNWAY HOLDING INSTRUCTIONS IS REQUIRED.

# AIRPORT DIAGRAM

VAN NUYS, CALIFORNIA  
VAN NUYS (VNY)