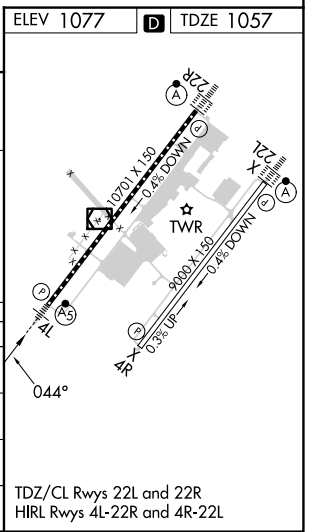
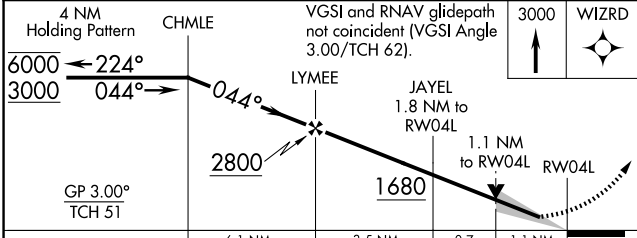
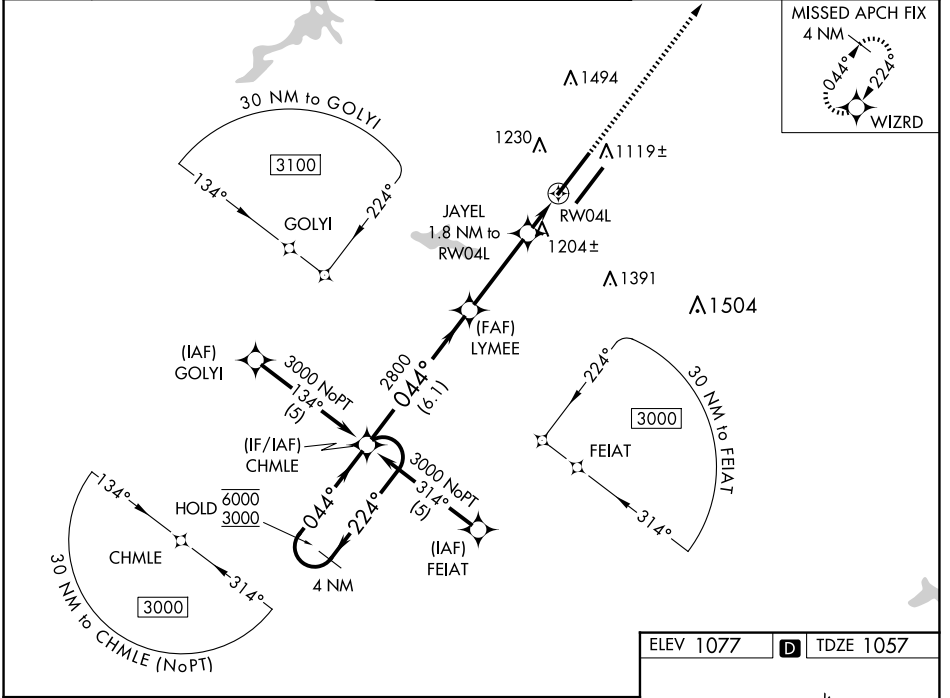


WAAS CH <b>62914</b> <b>W04A</b>	APP CRS <b>044°</b>	Rwy Ldg TDZE <b>1057</b> Apt Elev <b>1077</b>
----------------------------------------	------------------------	-----------------------------------------------------

# RNAV (GPS) RWY 4L

WILMINGTON AIR PARK (ILN)

RNP APCH - GPS.		MALSR	MISSED APPROACH: Climb to 3000 direct WIZRD and hold.
▼ For uncompensated Baro-VNAV systems, LNAV/VNAV NA below -17°C or above 54°C. ▲ For inop ALS, increase LNAV Cats A/B visibility to RVR 5500 and LNAV Cats C/D visibility to RVR 6000. *1800 RVR authorized with use of FD or AP or HUD to DA.			
D-ATIS <b>124.925</b>	COLUMBUS APP CON <b>118.85 269.275</b>	WILMINGTON TOWER <b>119.475</b>	GND CON <b>121.6</b>
			CLNC DEL <b>128.85</b>



CATEGORY	A	B	C	D
LPV DA *	1257/24		200 (200-½)	
LNAV/VNAV DA	1505/45		448 (500-¾)	
LNAV MDA	1460/24 403 (400-½)		1460/40 403 (400-¾)	
CIRCLING	1560-1 483 (500-1)		1860-2¼ 783 (800-2¼) 1860-2½ 783 (800-2½)	

TDZ/CL Rwy 22L and 22R  
HIRL Rwy 4L-22R and 4R-22L

EC-2, 07 AUG 2025 to 04 SEP 2025

EC-2, 07 AUG 2025 to 04 SEP 2025