


(BLUSH2.BLUSH) 23334

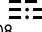
BLUSH TWO DEPARTURE

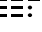
AL-759 (FAA)

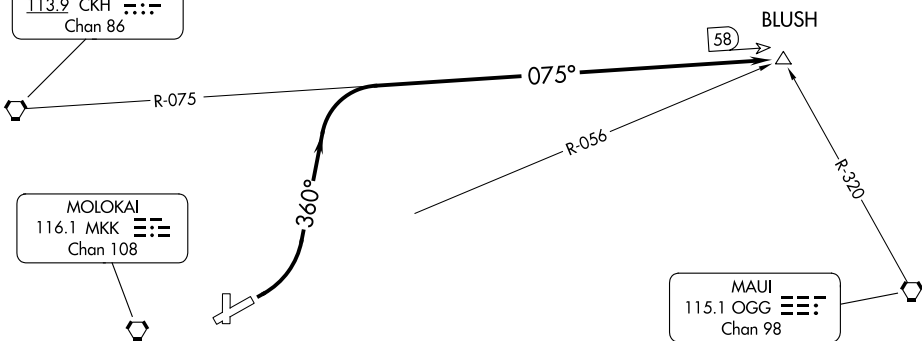
MOLOKAI (MKK) (PHMK)
KAUNAKAKAI, HAWAII

ATIS
128.2
GND CON
121.9
MOLOKAI TOWER ★
125.7 306.2
HCF CENTER
124.1 317.5

KOKO HEAD
113.9 CKH 
Chan 86

MOLOKAI
116.1 MKK 
Chan 108

MAUI
115.1 OGG 
Chan 98



PAC, 07 AUG 2025 to 02 OCT 2025

PAC, 07 AUG 2025 to 02 OCT 2025

TAKEOFF MINIMUMS

Rwy 17, 23, 35: NA-ATC.

Rwy 5: 300-1 with minimum climb of 325' per NM to 1500 or standard with minimum climb of 540' per NM to 800.

NOTE: Chart not to scale.



DEPARTURE ROUTE DESCRIPTION

TAKEOFF RUNWAY 5: Climbing left turn to 5000 on heading 360° and CKH VORTAC R-075 to BLUSH INT/CKH 58 DME.

BLUSH TWO DEPARTURE
(BLUSH2.BLUSH) 29MAY14

KAUNAKAKAI, HAWAII
MOLOKAI (MKK) (PHMK)