

LOS ALAMITOS, CALIFORNIA


RNAV (GPS) RWY 22L

APCH CRS	Rwy Idg	8001
223°	TDZE	36
	Arprt Elev	36

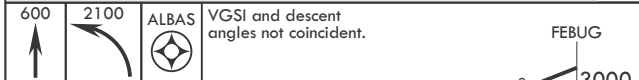
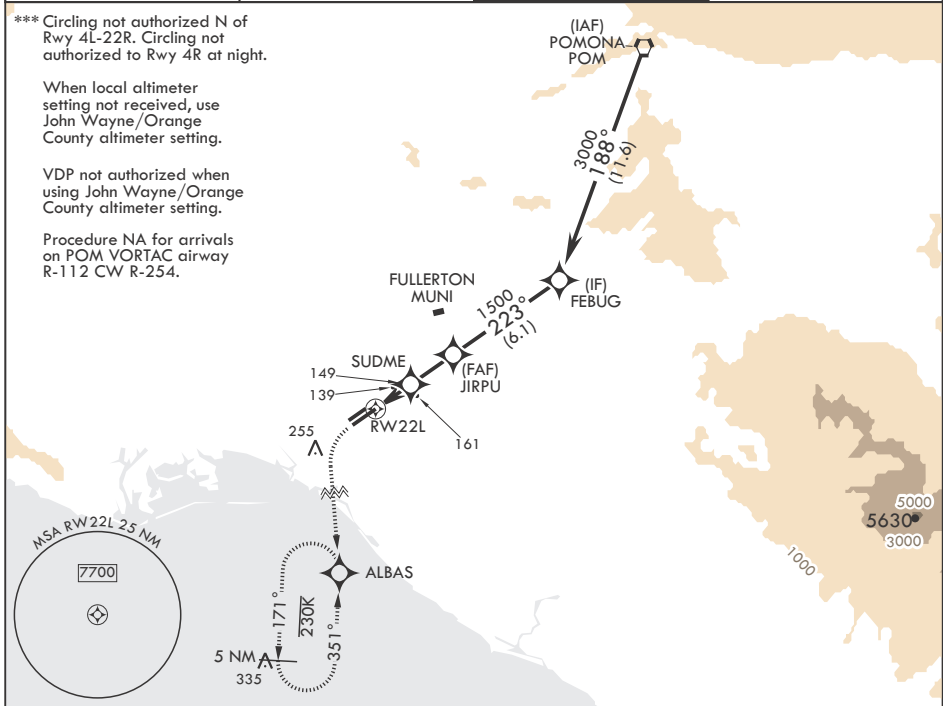
- (USA)
LOS ALAMITOS AAF (JOINT FORCES TRAINING BASE JFTB) (KSLI)

RNP APCH- GPS

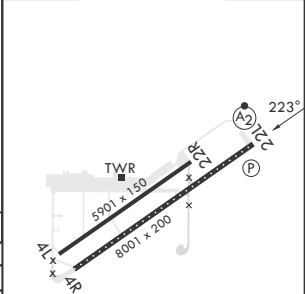
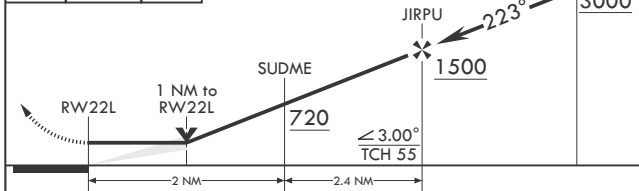
▼ * When ALS inop, increase CAT CD vis to 1 1/8 miles.
** When ALS inop, using John Wayne/Orange County altimeter setting, increase CAT CD vis to 1 1/4 miles.

SALS  MISSED APPROACH: Climb to 600 then climbing left turn to 2100 direct ALBAS and hold.

ATIS★ 118.875 379.975	SOCAL APP CON/DEP CON 125.35 316.125	TOWER★ 123.85 (CTAF) 251.15	GND CON 126.95 257.95
---------------------------------	--	---------------------------------------	---------------------------------



ELEV 36 TDZE 36



CATEGORY	A	B	C	D
LNAV MDA*	420-1		384	(400-1)
C CIRCLING***	440-1 404 (500-1)	500-1 464 (500-1)	600-1½ 564 (600-1½)	600-2 564 (600-2)
JOHN WAYNE/ORANGE COUNTY ALTIMETER SETTING MINIMUMS				
LNAV MDA**	460-1		424	(500-1)
C CIRCLING***	480-1 444 (500-1)	540-1 504 (600-1)	640-1¾ 604 (700-1¾)	640-2 604 (700-2)

HIRL Rwy 4R-22L
MIRL Rwy 4L-22R
REL Rwy 22L

LOS ALAMITOS, CALIFORNIA
Amdt 2 11JUL24

LOS ALAMITOS AAF (JOINT FORCES TRAINING BASE JFTB) (KSLI)
33°47'N - 118°03'W

RNAV (GPS) RWY 22L

SW-3, 07 AUG 2025 to 04 SEP 2025

SW-3, 07 AUG 2025 to 04 SEP 2025