

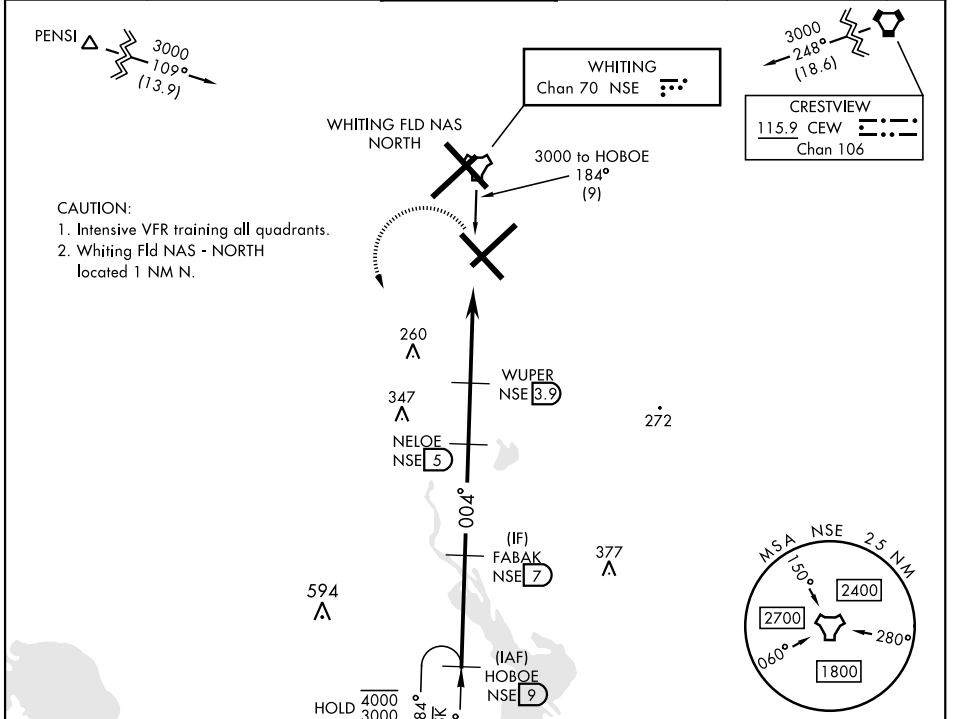
COPTER TACAN 004°

TACAN NSE Chan 70	APCH CRS 004°	Rwy Idg TDZE Arprt Elev 5996 N/A 177	[USN]	WHITING FLD NAS - SOUTH (KNDZ)
-----------------------------	-------------------------	--	-------	--------------------------------

▼ Maximum airspeed 90 KIAS.
Visibility reduction by helicopters NA.

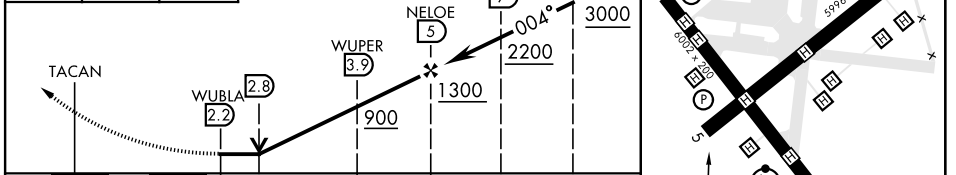
MISSED APPROACH: Climb to 700. Then climbing left turn to 3000. Intercept NSE TACAN R-184 to HOBEOE and hold. Contact Pensacola Approach Control.

ATIS ★ 273.575	PENSACOLA APP CON 124.85 235.775	SOUTH WHITING TOWER ★ 123.075 348.675	GND CON 317.65	CLNC DEL 355.6	ASR/ PAR
--------------------------	--	---	--------------------------	--------------------------	-------------



CAUTION:
1. Intensive VFR training all quadrants.
2. Whiting Fld NAS - NORTH located 1 NM N.

EMERG SAFE ALT 100 NM 3500



CATEGORY	COPTER	
H-004	560-1	390 (400-1)
CIRCLING	NOT AUTHORIZED	

MILTON, FLORIDA 30°42'N-87°01'W WHITING FLD NAS - SOUTH (KNDZ)

COPTER TACAN 004°

SE-3, 07 AUG 2025 TO 04 SEP 2025

SE-3, 07 AUG 2025 TO 04 SEP 2025