

WAAS CH 78106 W05A	APP CRS 052°	Rwy Idg TDZE Apt Elev	7000 595 612
--	------------------------	-----------------------------	---

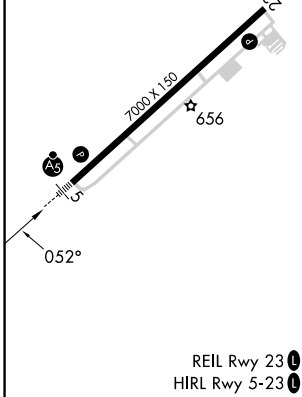
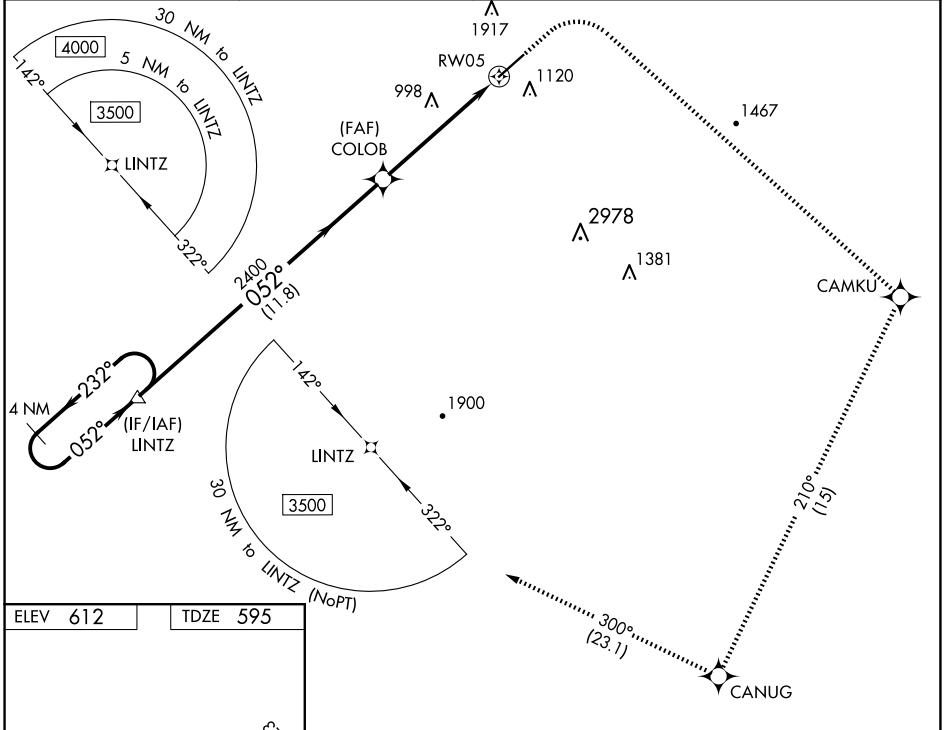
RNAV (GPS) RWY 5

ANNISTON RGNL (ANB)

⚠ Circling NA North of Rwy 5-23. DME/DME RNP-0.3 NA. When local altimeter setting not received, use Gadsden altimeter setting and increase all DA 66 feet and all MDA 80 feet and LPV all Cats, LNAV Cats C and D and Circling Cats A, B, and C visibility ¼ SM. For inop ALS increase LPV all Cats visibility to 1 SM. For inop ALS when using Gadsden altimeter setting, increase LPV all Cats visibility to 1½ SM. VDP NA with Gadsden altimeter setting.

MALSR MISSED APPROACH: Climb to 1600, then climbing right turn to 3500 direct CAMKU and track 210° to CANUG and track 300° to LINTZ and hold.

ASOS 119.675	BIRMINGHAM APP CON 132.15 285.45	CTAF 123.60	UNICOM 123.0
------------------------	--	-----------------------	------------------------



ELEV 612	TDZE 595							
4 NM Holding Pattern	LINTZ	1600	3500	CAMKU	tr 210°	CANUG	tr 300°	LINTZ
3500	← 232°	052°	→	052°	→	2400	*1.7 NM to RWY05	*LNAV only.
GP 3.00°	TCH 40							
		11.8 NM		3.9 NM		1.7 NM		
CATEGORY	A	B	C	D				
LPV DA	909-5/8				314 (300-5/8)			
LNAV MDA	1160-1/2		565 (600-1/2)		1160-1/4		565 (600-1/4)	
<input checked="" type="checkbox"/> CIRCLING	1420-1808 (900-1)				1420-21/4		1820-3	
					808 (900-21/4)		1208 (1300-3)	

SE-4, 07 AUG 2025 to 04 SEP 2025

SE-4, 07 AUG 2025 to 04 SEP 2025