

VOR/DME GFK	APP CRS	Rwy Ldg	7351
114.3	183°	TDZE	843
Chan 90		Apt Elev	845

VOR RWY 17R

GRAND FORKS INTL (GFK)

DME or RADAR required.

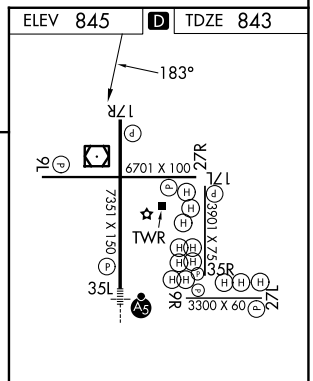
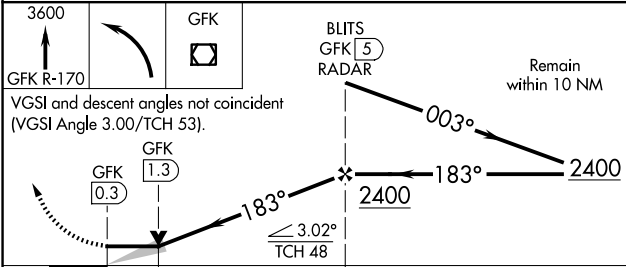
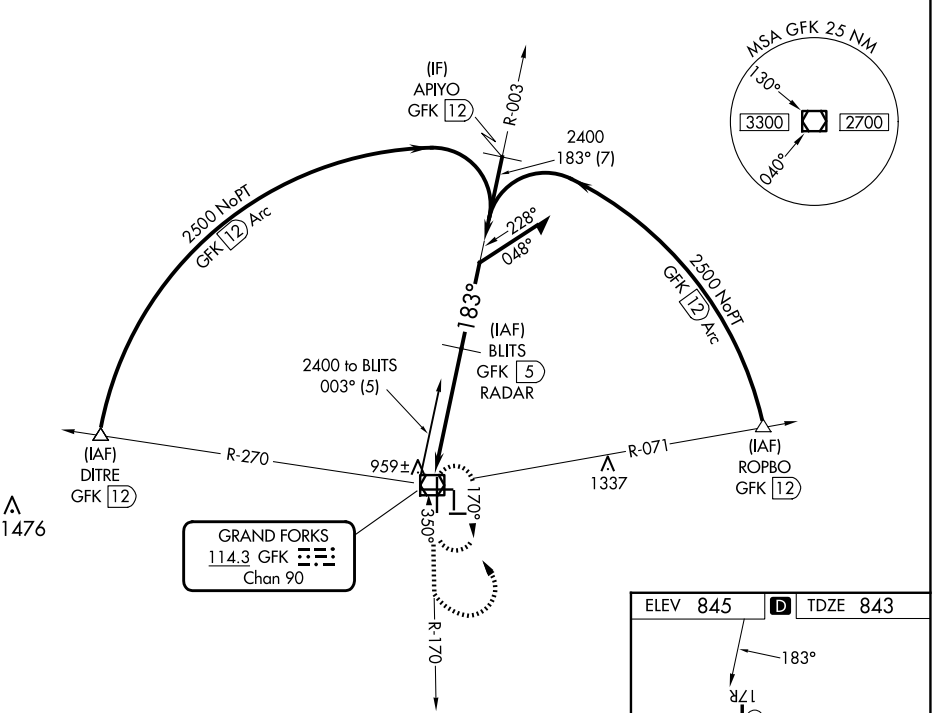
- When local altimeter setting not received, use Crookston altimeter setting and increase all MDAs 80 feet; Increase Cat C/D visibility to 1 3/8 SM and Circling Cat C visibility 1/4 SM.
- VDP NA with Crookston altimeter setting.

MISSED APPROACH: Climb to 3600 on GFK VOR/DME R-170 then left turn direct GFK VOR/DME and hold.

ATIS	GRAND FORKS APP CON *	GRAND FORKS TOWER*	GND CON	CLNC DEL	UNICOM
119.4	118.1 318.1	118.4(CTAF) 350.35	124.575	135.725	122.95

NC-1, 07 AUG 2025 to 04 SEP 2025

NC-1, 07 AUG 2025 to 04 SEP 2025



CATEGORY	A	B	C	D
S-17R	1220-1	377 (400-1)		1220-1 377 (400-1 1/4)
CIRCLING	1280-1 435 (500-1)	1300-1 455 (500-1)	1400-1 1/2 555 (600-1 1/2)	1420-2 575 (600-2)

MIRL Rwy 9L-27R, 9R-27L and 17L-35R	
HIRL Rwy 17R-35L	
REIL Rwy 17R, 9L, and 27R	
FAF to MAP 4.7 NM	
Knots	60 90 120 150 180
Min:Sec	4:42 3:08 2:21 1:53 1:34