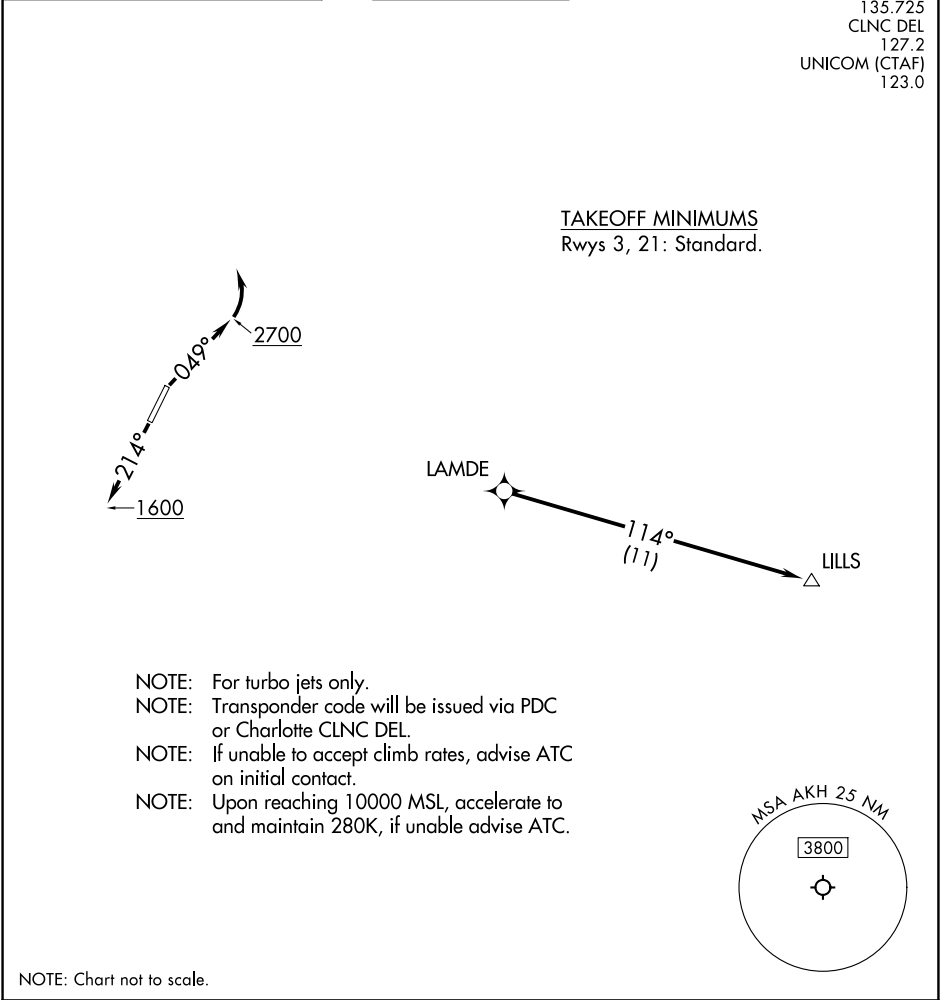


RNAV 1 - DME/DME/IRU or GPS.	TOP ALTITUDE: 3000	CHARLOTTE DEP CON 120.05 257.2 ASOS 135.725 CLNC DEL 127.2 UNICOM (CTAF) 123.0
RADAR required.		



<div>T</div> <div>DEPARTURE ROUTE DESCRIPTION</div> <div>TAKEOFF RUNWAY 3: Climb on heading 049° to 2700 before turning left, then on heading assigned by ATC, thence. . . . TAKEOFF RUNWAY 21: Climb on heading 214° to 1600 before proceeding north, then on heading assigned by ATC, thence. on RADAR vectors to LAMDE, then on depicted route to LILLS. Maintain 3000. Expect clearance to filed altitude within 10 minutes after departure.</div>
