

WAAS CH <b>97602</b> <b>W31A</b>	APP CRS <b>315°</b>	Rwy Idg <b>5600</b> TDZE <b>74</b> Apt Elev <b>76</b>
--	------------------------	---

# RNAV (GPS) RWY 31

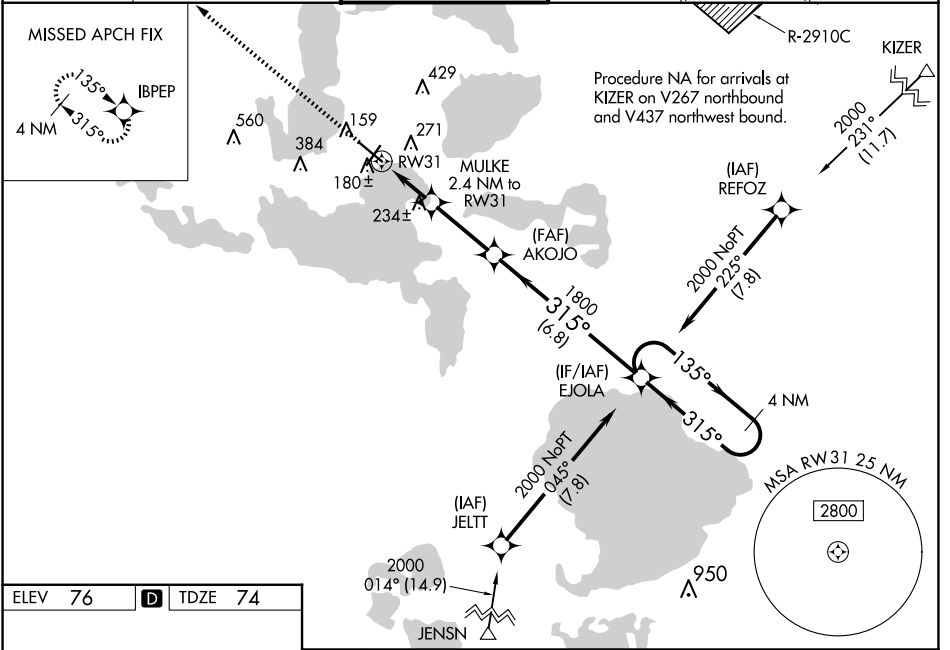
LEESBURG INTL (L.E.E)

RNP APCH-GPS.

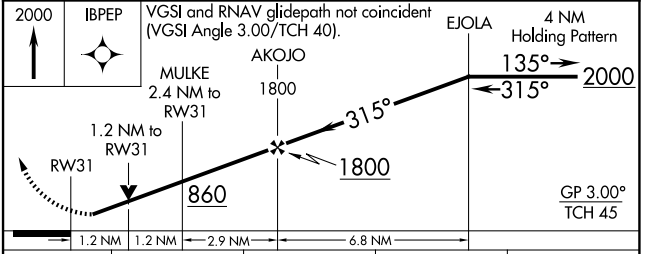
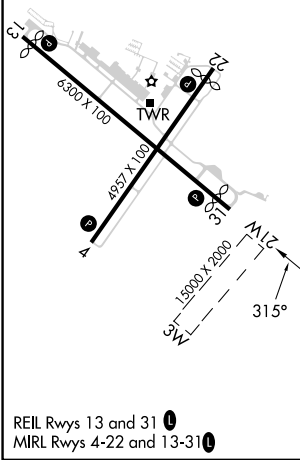
**⚠** Baro-VNAV and VDP NA when using Orlando Intl altimeter setting. For uncompensated Baro-VNAV systems, LNAV/VNAV NA below -15°C or above 54°C. When local altimeter setting not received, use Orlando Intl altimeter setting and increase LPV DA to 410 feet. Increase LNAV/VNAV DA to 444 feet. Increase all MDAs 100 feet and LNAV visibility Cat C/D ¼ SM and Circling visibility Cat C/D ¼ SM. Circling Rwy 4, 22 NA at night.

**MISSED APPROACH:**  
Climb to 2000 direct IBPEP and hold.

ATIS <b>134.325</b>	ORLANDO APP CON <b>135.3 351.9</b>	LEESBURG TOWER ★ <b>119.35 (CTAF) 0</b>	GND CON <b>121.725</b>	CLNC DEL <b>120.225</b> (When twr closed)	UNICOM <b>122.725</b>
------------------------	---------------------------------------	--	---------------------------	---	--------------------------



ELEV 76	<b>D</b>	TDZE 74
---------	----------	---------



CATEGORY	A	B	C	D
LPV DA	324-1		250 (300-1)	
LNAV/VNAV DA	358-1		284 (300-1)	
LNAV MDA	500-1 426 (500-1)		500-1¼ 426 (500-1¼)	
CIRCLING	700-1 624 (700-1)		780-2 704 (800-2) 780-2¼ 704 (800-2¼)	

SE-3, 07 AUG 2025 to 04 SEP 2025

SE-3, 07 AUG 2025 to 04 SEP 2025