


(NIKOL2.NIKOL) 23278

NIKOL TWO DEPARTURE (OBSTACLE)

AL-6841 (FAA)

MAMMOTH YOSEMITE (MMH)
MAMMOTH LAKES, CALIFORNIA

OAKLAND CENTER
125.75 284.65
UNICOM
122.8
AWOS-3
118.05

MINA
115.1 MVA 
Chan 98

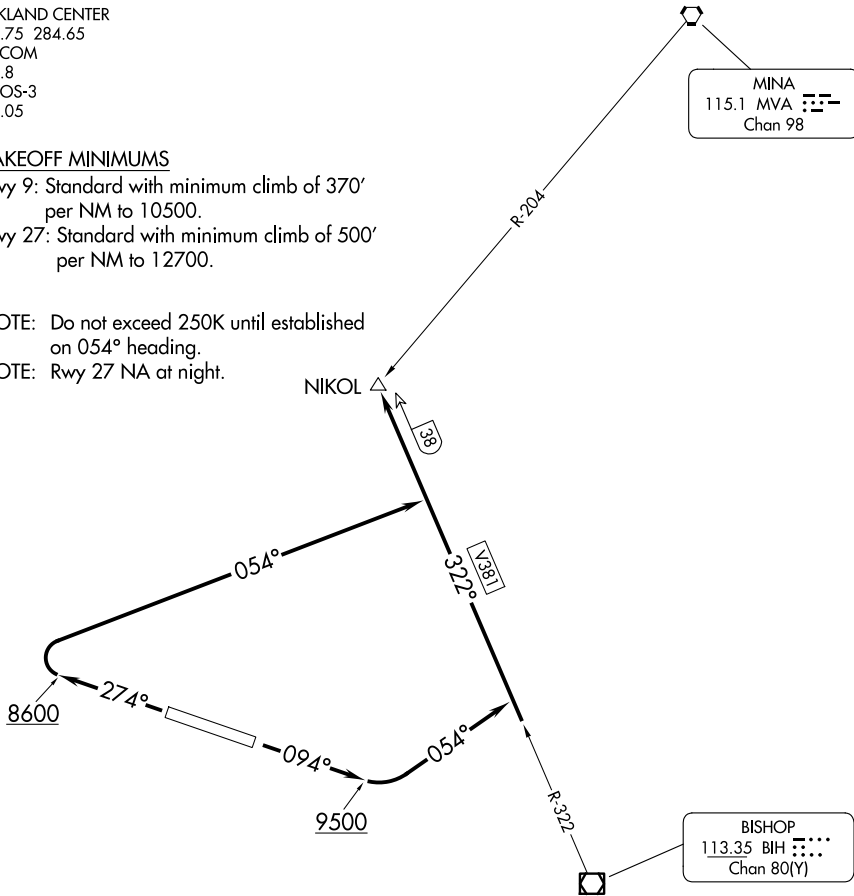
TAKEOFF MINIMUMS

Rwy 9: Standard with minimum climb of 370' per NM to 10500.

Rwy 27: Standard with minimum climb of 500' per NM to 12700.

NOTE: Do not exceed 250K until established on 054° heading.

NOTE: Rwy 27 NA at night.



TAKEOFF OBSTACLE NOTES

- Rwy 9: Vehicles on roadway beginning 11' from DER, 460' right of centerline, up to 17' AGL/7078' MSL. Trees beginning 1956' from DER, 554' left of centerline, up to 100' AGL/7186' MSL. Trees beginning 3994' from DER, 963' right of centerline, up to 100' AGL/7252' MSL.
- Rwy 27: Vehicles on roadway and bushes beginning 178' from DER, 269' left of centerline, up to 17' AGL/7160' MSL. Building 386' from DER, 434' right of centerline, 21' AGL/7155' MSL. Terrain and trees beginning 1.9 NM from DER, 334' right of centerline, up to 68' AGL/7970' MSL.

NOTE: Chart not to scale.

DEPARTURE ROUTE DESCRIPTION

TAKEOFF RUNWAY 9: Climb on heading 094° to 9500, then climbing left turn heading 054° to intercept BIH R-322 to NIKOL INT. Maintain 13000.

TAKEOFF RUNWAY 27: Climb on heading 274° to 8600, then climbing right turn heading 054° to intercept BIH R-322 to NIKOL INT. Maintain 13000.

NIKOL TWO DEPARTURE (OBSTACLE)

(NIKOL2.NIKOL) 17JUN21

MAMMOTH LAKES, CALIFORNIA
MAMMOTH YOSEMITE (MMH)

SW-2, 07 AUG 2025 to 04 SEP 2025

SW-2, 07 AUG 2025 to 04 SEP 2025