

WAAS CH 48840 W35A	APP CRS 351°	Rwy Idg TDZE 138 Apt Elev 138
----------------------------------------	------------------------	---------------------------------------------------

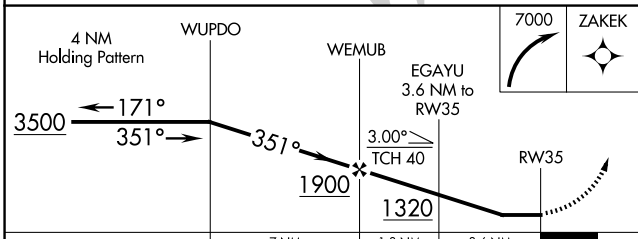
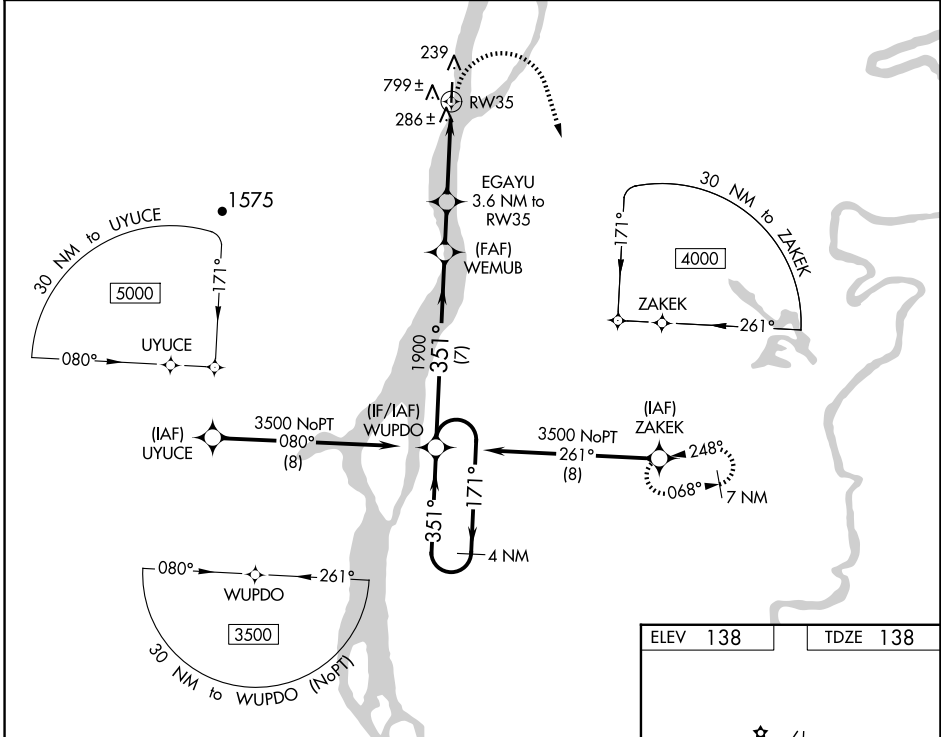
RNAV (GPS) RWY 35

GRAYLING (KGX)(PAGX)

NA Circling NA west of Rwy 17-35. Rwy 35 helicopter visibility reduction below ¼ SM NA. DME/DME RNP-0.3 NA.
23°C Use Shageluk altimeter setting; when not received, use Anvik altimeter setting.

MISSED APPROACH: Climbing right turn to 7000 direct ZAKEK and hold, continue climb-in-hold to 7000.

SHX/PAHX AWOS-3P 121.575	ANCHORAGE CENTER 118.15 251.05	KENAI RADIO 122.4	CTAF 122.9
------------------------------------	------------------------------------------	-----------------------------	----------------------



ELEV 138	TDZE 138
----------	----------

Vertical scale for RWY 35: 4000 x 75, 1 1/2 UP.

MIRL Rwy 17-35

CATEGORY	A	B	C	D
IP MDA	700-1	562 (600-1)	700-1 5/8	562 (600-1 5/8)
LNAV MDA	1080-1 1/4	942 (1000-1 1/4)	1080-2 1/2	942 (1000-2 1/2)
C CIRCLING	1100-1 1/4 962 (1000-1 1/4)	1100-1 1/2 962 (1000-1 1/2)	1220-3 1082 (1100-3)	1420-3 1282 (1300-3)

AK, 07 AUG 2025 to 02 OCT 2025

AK, 07 AUG 2025 to 02 OCT 2025