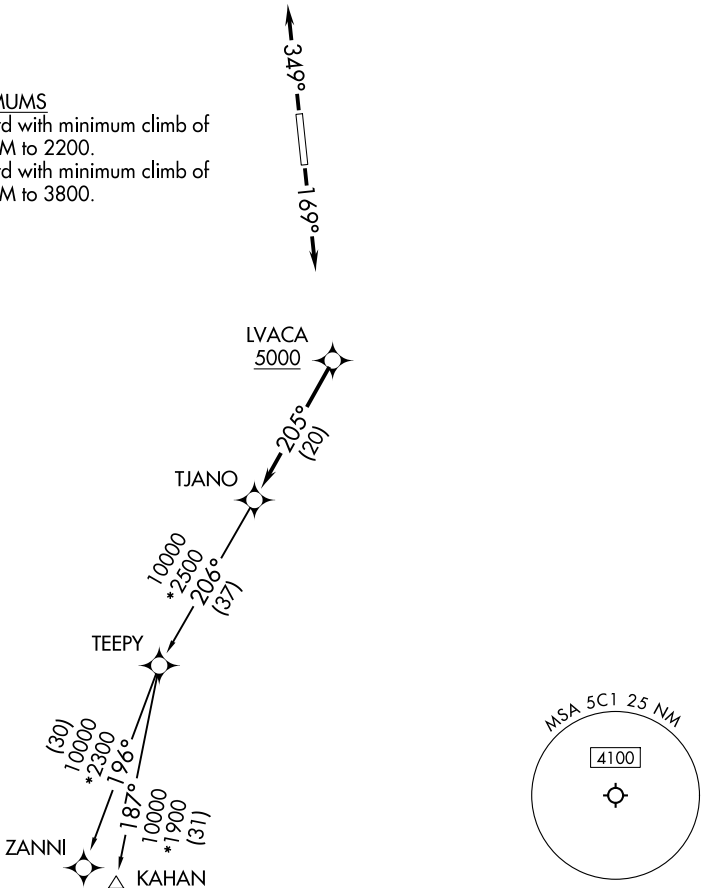


| | | |
|------------------------------------|--|--|
| SAN ANTONIO DEP CON 125.1 307.0 | RNAV 1 - DME/DME IRU or GPS. RADAR required for non-GPS equipped aircraft. RADAR required. | TOP ALTITUDE: ASSIGNED BY ATC |
|------------------------------------|--|--|

TAKEOFF MINIMUMS
Rwy 17: Standard with minimum climb of 210' /NM to 2200.
Rwy 35: Standard with minimum climb of 250' /NM to 3800.



| |
|---|
| DEPARTURE ROUTE DESCRIPTION <u>TAKEOFF RUNWAY 17:</u> Climb on heading 169° or as assigned by ATC, for vectors to LVACA, thence. . . <u>TAKEOFF RUNWAY 35:</u> Climb on heading 349° or as assigned by ATC, for vectors to LVACA, thence.on track 205° to TJANO, then on transition. Maintain ATC assigned altitude. Expect filed altitude 10 minutes after departure. <u>KAHAN TRANSITION (TJANO2.KAHAN)</u> <u>ZANNI TRANSITION (TJANO2.ZANNI)</u> |
|---|