

HI-TACAN Y RWY 25

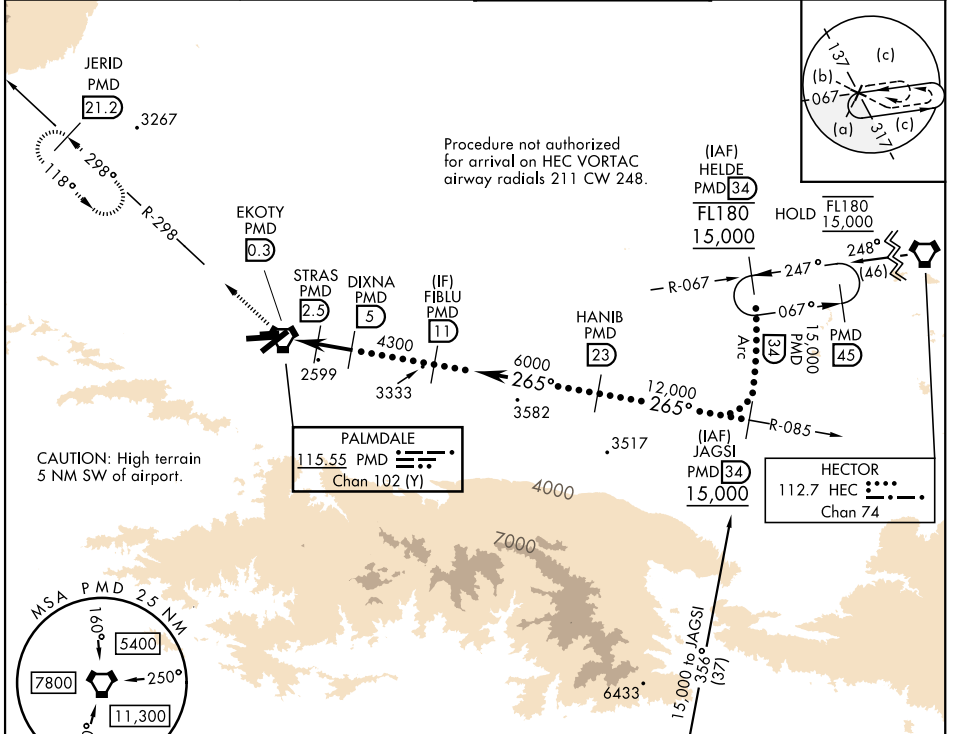
TACAN PMD Chan 102 (Y)	APCH CRS 265°	Rwy Idg TDZE Arprt Elev 12,002 2503 2543
----------------------------------	-------------------------	--

[USAF]

PALMDALE USAF PLANT 42 (KPMDF)

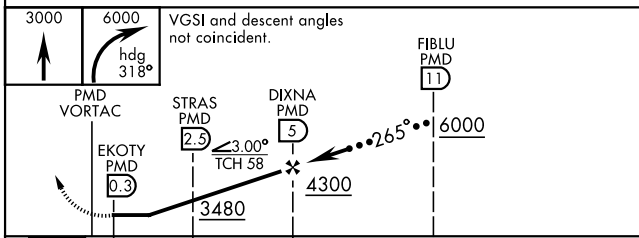
∇ * Circling not authorized S of Rwy 4 and 25.
▲ MISSED APPROACH: Climb to 3000 then climbing right turn to 6000 on heading 318° and on PMD VORTAC R-298 to JERID INT/PMD 21.2 DME and hold.

ATIS 118.275	JOSHUA APP CON 124.55 363.0	TOWER★ 123.7 (CTAF) 0 317.6	GND CON 121.9 317.6
------------------------	---------------------------------------	---------------------------------------	-------------------------------



EMERG SAFE ALT 100 NM 14,400

MSA PMD 2.5 NM
 1000
 5400
 7800
 250°
 11,300
 3400



ELEV	2543	TDZE	2503
------	------	------	------

ASSAULT STRIP

072° 252°

0.3% UP 6,000 x 75

0.6% UP 12,002 x 200

TWR

HIRL Rwy 4-22, 7-25

REIL Rwy 4, 22, 7, 25

CATEGORY	C	D	E
S-25	2860-1	357 (400-1)	
CIRCLING*	3140-1½ 597 (600-1½)	3760-3	1217 (1300-3)

HI-TACAN Y RWY 25

SW-3, 04 SEP 2025 to 02 OCT 2025

SW-3, 04 SEP 2025 to 02 OCT 2025