

BLYTE FIVE ARRIVAL

AL-322 (FAA)

PHOENIX, ARIZONA

SW-4, 04 SEP 2025 to 02 OCT 2025

ARRIVAL ROUTE DESCRIPTION

BLYTE TRANSITION (BLH.BLH5): From over BLH VORTAC on BLH R-082 to SALOM, then on GBN R-285 and IWA R-256 to ARLIN. Thence

PHOENIX SKY HARBOR INTL: Rwys 7L/R or 8: From over ARLIN, expect vectors to final approach course; Rwys 25L/R or 26: From over ARLIN, on IWA R-256 to TUKEE. Expect vectors to final approach course prior to TUKEE.
SATELLITE AIRPORTS: Expect vectors after passing SALOM.

LOST COMMUNICATIONS: After ARLIN, on IWA R-256 and PXR R-143 to PXR VORTAC.

SALOM

VERTICAL NAVIGATION PLANNING INFORMATION
TurboPROP expect 17000
TurboPROP landing KPHX expect vectors after SALOM.

BLYTE
117.4 BLH
Chan 121

BUCKEYE
110.6 BKK
Chan 43

PHOENIX
115.6 PXR
Chan 103

BARB
116.8 BZA
Chan 115

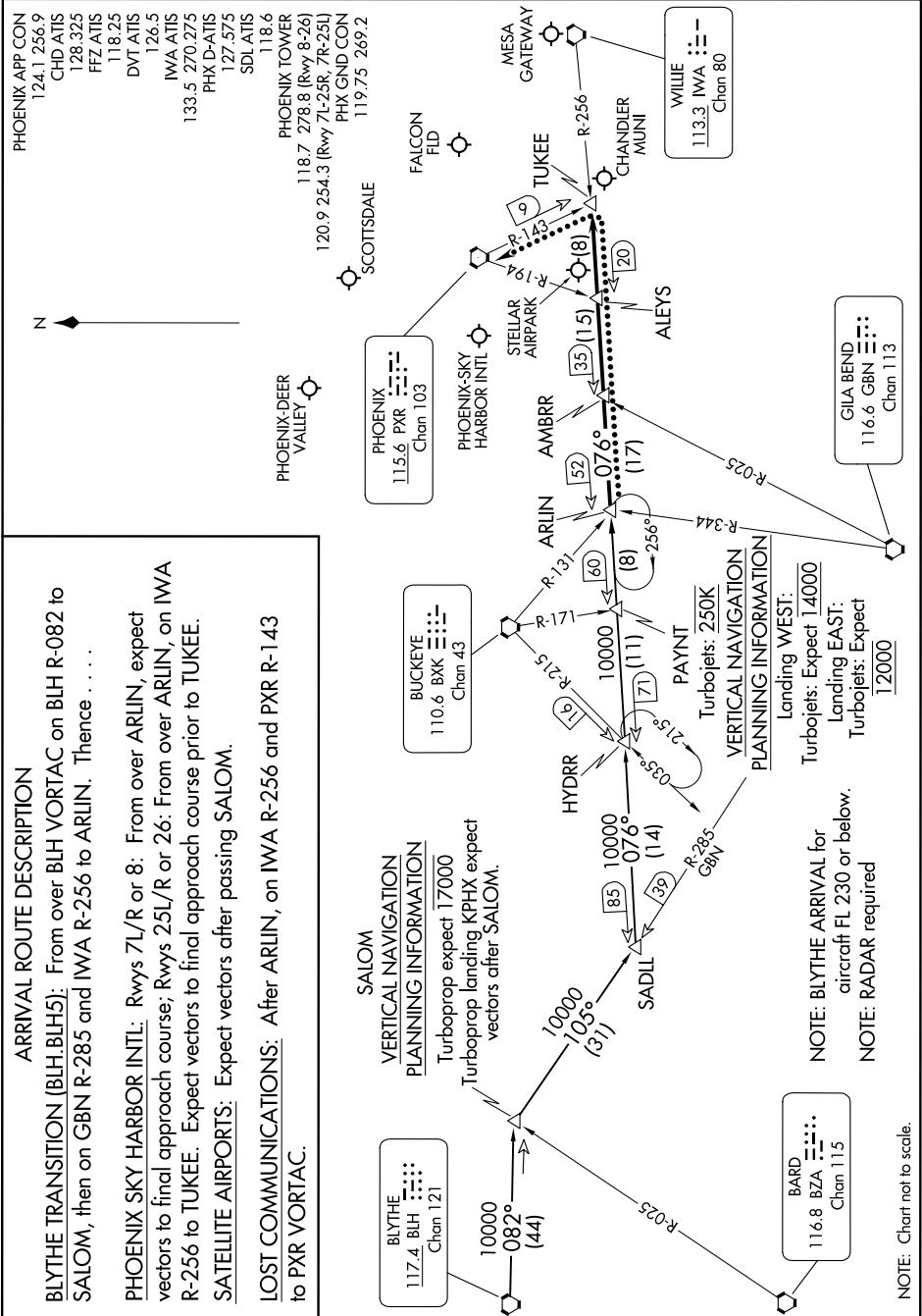
NOTE: BLYTE ARRIVAL for aircraft FL 230 or below.
NOTE: RADAR required

VERTICAL NAVIGATION PLANNING INFORMATION
Landing WEST:
Turbojets: Expect 14000
Landing EAST:
Turbojets: Expect 12000

GILA BEND
116.6 GBN
Chan 113

WILLIE IWA
113.3 IWA
Chan 80

- PHOENIX APP CON 124.1 256.9
- CHD ATIS 128.325
- FFZ ATIS 118.25
- DVT ATIS 126.5
- IWA ATIS 133.5 270.275
- PHX D-ATIS 127.575
- SDL ATIS 118.6
- PHOENIX TOWER 118.7 278.8 (Rwy 8-26)
- 120.9 254.3 (Rwy 7L-25R, 7R-25L)
- PHX GND CON 119.75 269.2



BLYTE FIVE ARRIVAL

PHOENIX, ARIZONA

SW-4, 04 SEP 2025 to 02 OCT 2025

NOTE: Chart not to scale.