

APP CRS	Rwy Idg	4321
096°	TDZE	1519
	Apt Elev	1519

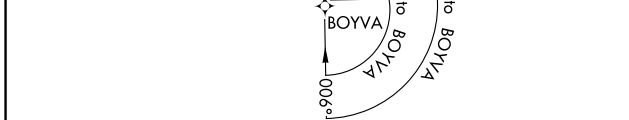
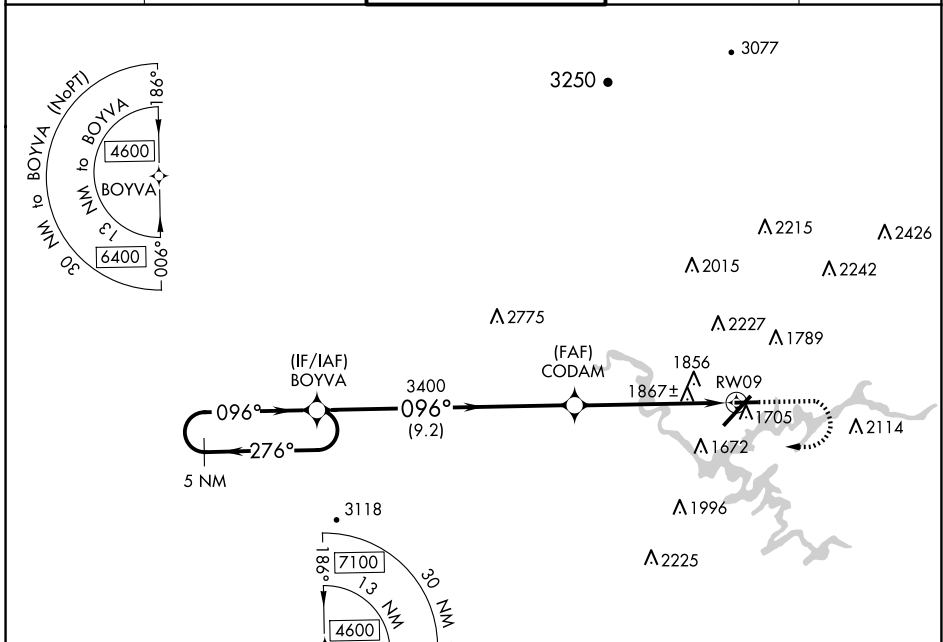
RNAV (GPS) RWY 9

TRI-CITIES (TRI)

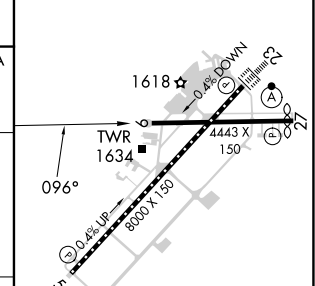
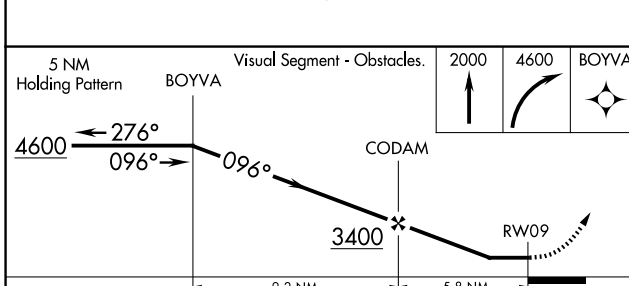
⚠ Circling NA NW of Rws 9 and 23. Rwy 9 helicopter visibility reduction below 1 SM NA. DME/DME RNP-0.3 NA. Straight-in Rwy 9 NA at night, Circling Rwy 9 NA at night.

MISSED APPROACH: Climb to 2000 then climbing right turn to 4600 direct BOYVA and hold.

ATIS 118.25	TRI-CITY APP CON ★ 134.425 349.0	TRI-CITY TOWER ★ 119.5 (CTAF) 257.8	GND CON 121.7 348.6	UNICOM 122.95
-----------------------	--	---	-------------------------------	-------------------------



ELEV 1519	D	TDZE 1519
-----------	----------	-----------



CATEGORY	A	B	C	D
LNVA MDA	2120-1	601 (700-1)	2120-1¾	601 (700-1¾)
C CIRCLING	2120-1 601 (700-1)	2180-1 661 (700-1)	2300-2¼ 781 (800-2¼)	2500-3 981 (1000-3)

REIL Rws 5 and 27
HIRL Rwy 5-23
MIRL Rwy 9-27
TDZ/CL Rwy 23

SE-1, 04 SEP 2025 to 02 OCT 2025

SE-1, 04 SEP 2025 to 02 OCT 2025