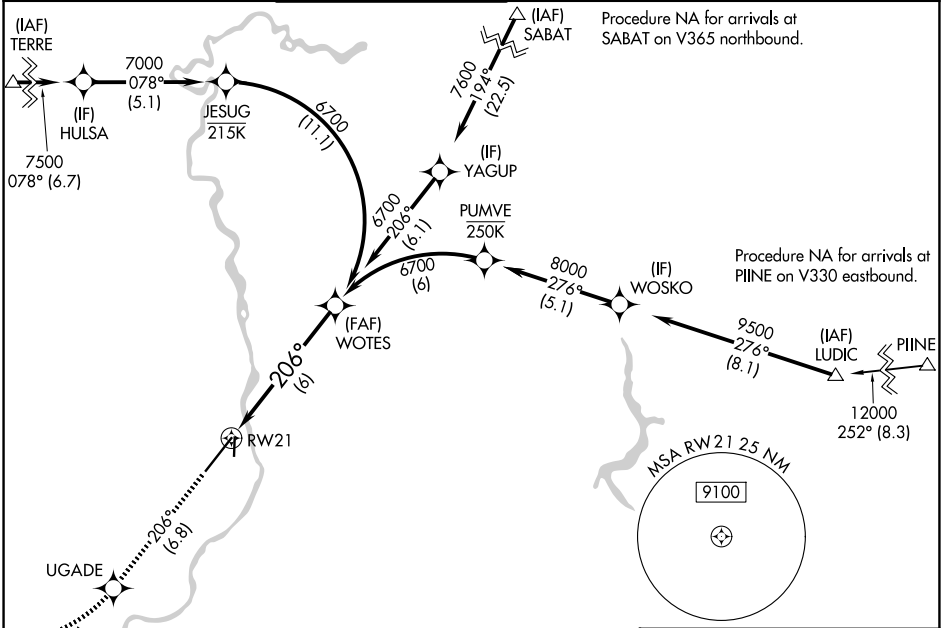


APP CRS 206°	Rwy Ldg TDZE Apt Elev	9002 4735 4744
------------------------	-----------------------------	---

RNAV (RNP) Z RWY 21

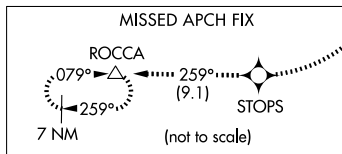
IDAHO FALLS RGNL (IDA)

RNP AR APCH-GPS.		IDaho Falls Tower * 118.5 (CTAF) 0 257.8		GND CON 121.7	CLNC DEL 121.7	GCO 121.725	UNICOM 122.95
<p>For uncompensated Baro-VNAV systems, procedure NA below -27°C or above 54°C. For inop ALS, increase RNP 0.11 visibility all Cats to RVR 4500.</p>				MALSR <p>MISSED APPROACH: Climb to 7500 on track 206° to UGADE, right turn to STOPS, and on track 259° to ROCCA and hold.</p>			

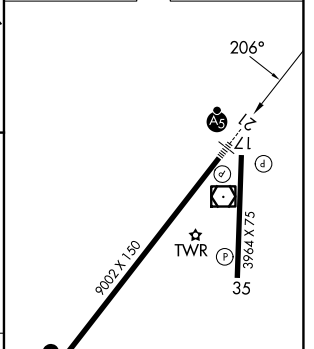
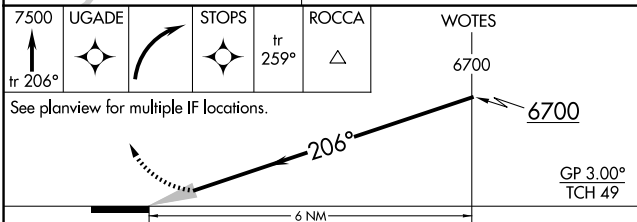


NW-1, 04 SEP 2025 to 02 OCT 2025

NW-1, 04 SEP 2025 to 02 OCT 2025



ELEV 4744	D TDZE 4735
-----------	--------------------



CATEGORY	A	B	C	D
RNP 0.11 DA		5011/24	276 (300-½)	
RNP 0.30 DA		5120/35	385 (400-¾)	

AUTHORIZATION REQUIRED

REIL Rwy 3 1
HIRL Rwy 3-21 1
MIRL Rwy 17-35