

LOC I-BWD <b>109.1</b>	APP CRS <b>175°</b>	Rwy Ldg TDZE Apt Elev	<b>5599</b> <b>1387</b> <b>1387</b>
---------------------------	------------------------	-----------------------------	-------------------------------------------

# LOC RWY 17

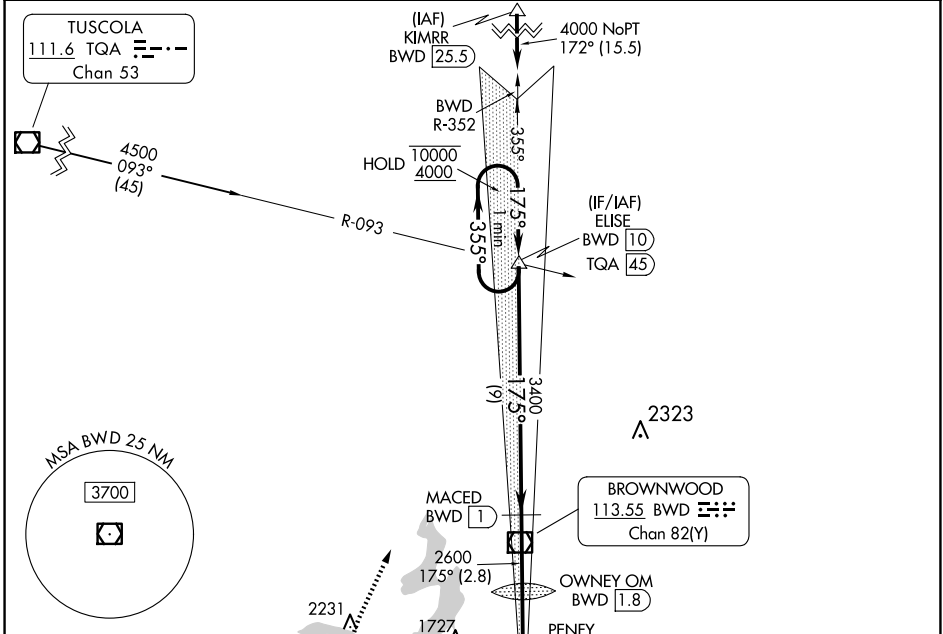
BROWNWOOD RGNL (BWD)

DME required. RADAR required for procedure entry at KIMRR.

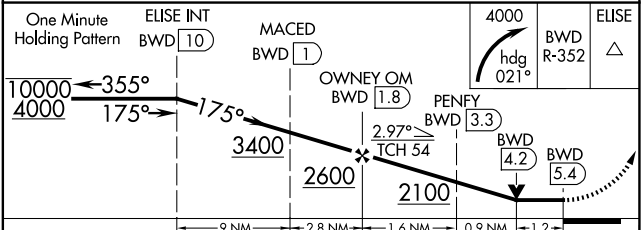
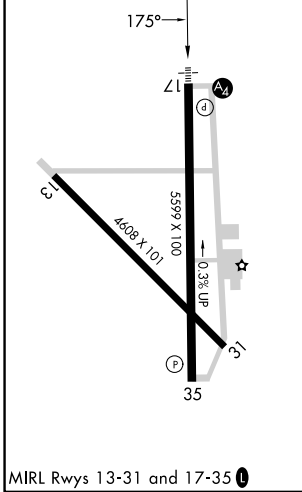
MALS

MISSED APPROACH: Climbing right turn to 4000 on heading 021° and on BWD VOR/DME. DME use requires simultaneous reception of I-BWD and BWD DME.

AWOS-3 <b>118.325</b>	FORT WORTH CENTER <b>127.45 290.3</b>	UNICOM <b>122.8 (CTAF)</b>
--------------------------	------------------------------------------	-------------------------------



ELEV 1387	TDZE 1387
-----------	-----------



CATEGORY	A	B	C	D
S-LOC 17		1760-3/4	373 (400-3/4)	
CIRCLING	1820-1 433 (500-1)	1840-1 453 (500-1)	2040-1 3/4 653 (700-1 3/4)	2160-2 1/2 773 (800-2 1/2)

SC-3, 04 SEP 2025 to 02 OCT 2025

SC-3, 04 SEP 2025 to 02 OCT 2025