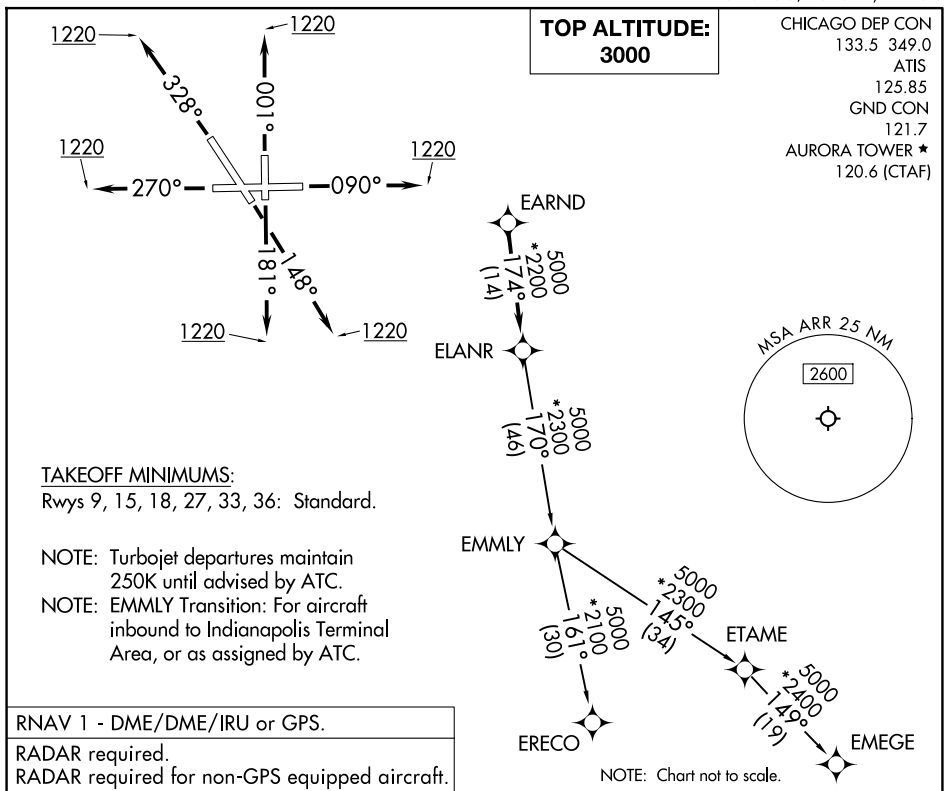


ELANR EIGHT DEPARTURE (RNAV)



DEPARTURE ROUTE DESCRIPTION

TAKEOFF RUNWAY 9: Climb on heading 090° to 1220, then as assigned by ATC, for vectors to EARND, thence. . . .

TAKEOFF RUNWAY 15: Climb on heading 148° to 1220, then as assigned by ATC, for vectors to EARND, thence. . . .

TAKEOFF RUNWAY 18: Climb on heading 181° to 1220, then as assigned by ATC, for vectors to EARND, thence. . . .

TAKEOFF RUNWAY 27: Climb on heading 270° to 1220, then as assigned by ATC, for vectors to EARND, thence. . . .

TAKEOFF RUNWAY 33: Climb on heading 328° to 1220, then as assigned by ATC, for vectors to EARND, thence. . . .

TAKEOFF RUNWAY 36: Climb on heading 001° to 1220, then as assigned by ATC, for vectors to EARND, thence. . . .

...on track 174° to ELANR, then on (transition), maintain 3000.
Expect filed altitude 10 minutes after departure.

EMERGE TRANSITION (ELANR8.EMERGE):

EMMLY TRANSITION (ELANR8.EMMLY):

ERECO TRANSITION (ELANR8.ERECO):