

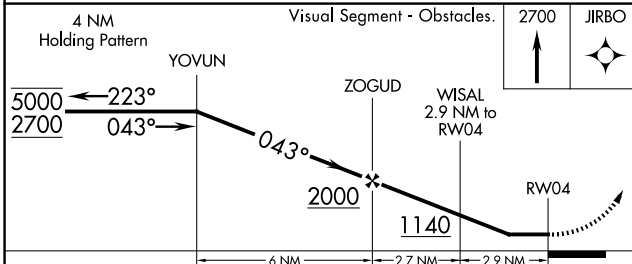
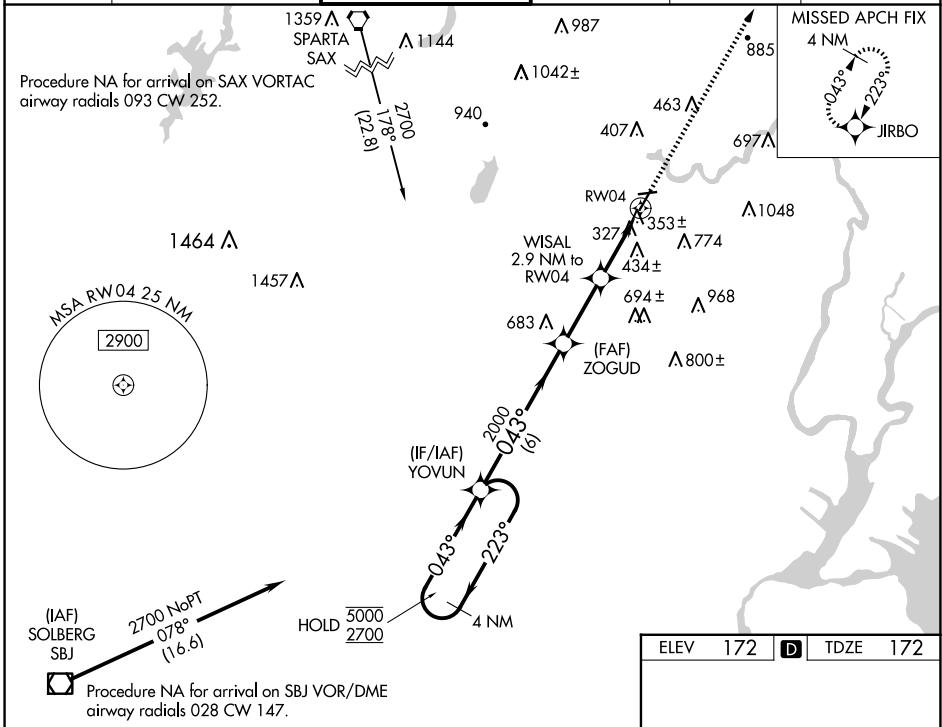
WAAS CH 42622 W04A	APP CRS 043°	Rwy Ldg 3977 TDZE 172 Apt Elev 172
--	------------------------	---

RNAV (GPS) RWY 4

ESSEX COUNTY (CDW)

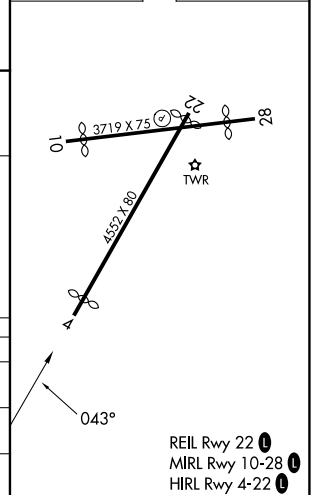
RNP APCH - GPS.		MISSED APPROACH: Climb to 2700 direct JIRBO and hold.			
Rwy 4 helicopter visibility reduction below 1 SM NA. Circling Rwy 10, 28 NA at night. Circling NA E of Rwy 4-22.					

ATIS 135.5	NEWARK APP CON 127.6 379.9	CALDWELL TOWER ★ 119.8 (CTAF) 0	GND CON 121.9	CLNC DEL 121.1	UNICOM 122.95
----------------------	--------------------------------------	---	-------------------------	--------------------------	-------------------------



ELEV 172	D	TDZE 172
----------	----------	----------

CATEGORY	A	B	C	D
LP MDA	620-1	448 (500-1)	620-1 3/8	448 (500-1 3/8)
LNNAV MDA	660-1	488 (500-1)	660-1 3/8	488 (500-1 3/8)
C CIRCLING	960-1 788 (800-1)	1040-1 1/4 868 (900-1 1/4)	1100-2 3/4 928 (1000-2 3/4)	1400-3 1228 (1300-3)



- REIL Rwy 22 **0**
- MIRL Rwy 10-28 **0**
- HIRL Rwy 4-22 **0**

NE-2, 04 SEP 2025 to 02 OCT 2025

NE-2, 04 SEP 2025 to 02 OCT 2025