

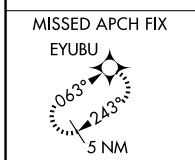
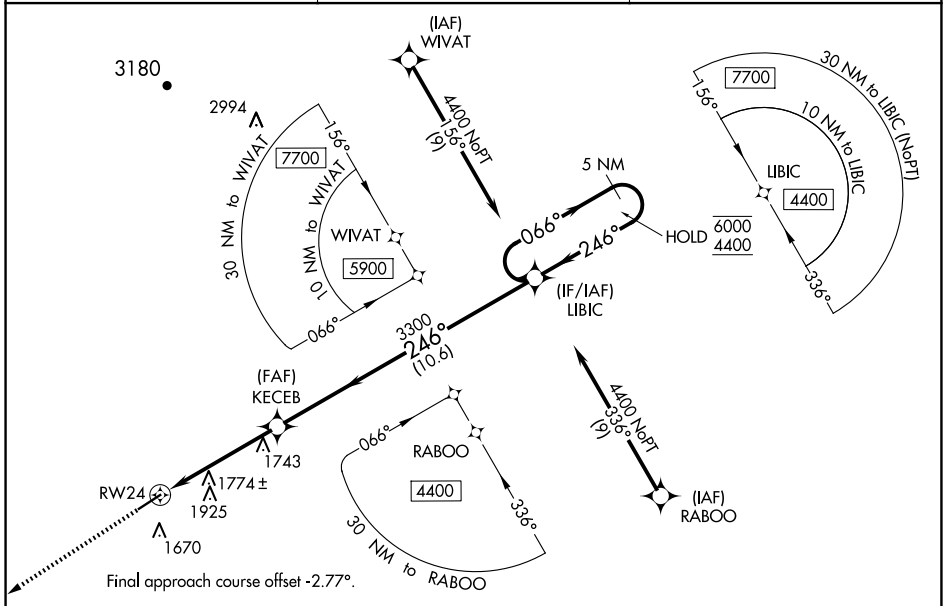
WAAS CH 49121 W24A	APP CRS 246°	Rwy Idg 5503 TDZE 1448 Apt Elev 1448
--	------------------------	---

RNAV (GPS) RWY 24

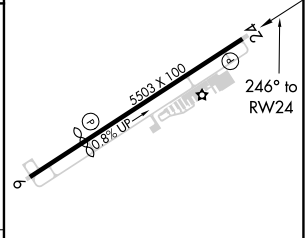
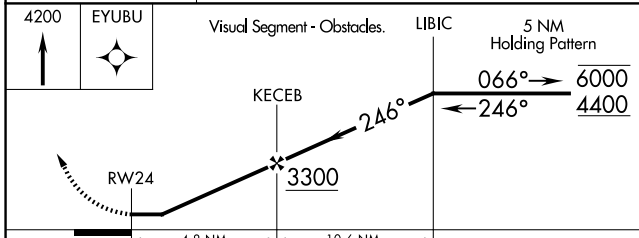
HABERSHAM COUNTY (AJR)

RNP APCH - GPS.		MISSED APPROACH: Climb to 4200 direct EYUBU and hold.
	Rwy 24 helicopter visibility reduction below 1 SM NA. Procedure NA at night.	

AWOS-3 119.175	ATLANTA CENTER 134.8 379.95	UNICOM 122.7 (CTAF) 0
--------------------------	---------------------------------------	---------------------------------



ELEV 1448	D	TDZE 1448
-----------	----------	-----------



CATEGORY	A	B	C	D
LP MDA	2000-1	552 (600-1)	2000-1 $\frac{5}{8}$	552 (600-1 $\frac{1}{4}$)
LNAV MDA	2040-1	592 (600-1)	2040-1 $\frac{3}{4}$	592 (600-1 $\frac{1}{4}$)
C CIRCLING	2100-1 652 (700-1)	2280-1 $\frac{1}{4}$ 832 (900-1 $\frac{1}{4}$)	2280-2 $\frac{1}{2}$ 832 (900-2 $\frac{1}{2}$)	2280-2 $\frac{3}{4}$ 832 (900-2 $\frac{3}{4}$)

MIRL Rwy 6-24 0

SE-4, 04 SEP 2025 to 02 OCT 2025

SE-4, 04 SEP 2025 to 02 OCT 2025