

LOC I-HNZ <b>109.75</b>	APP CRS <b>060°</b>	Rwy Idg 5501
		TDZE 526
		Apt Elev 526

# LOC RWY 6

HENDERSON/OXFORD (HNZ)

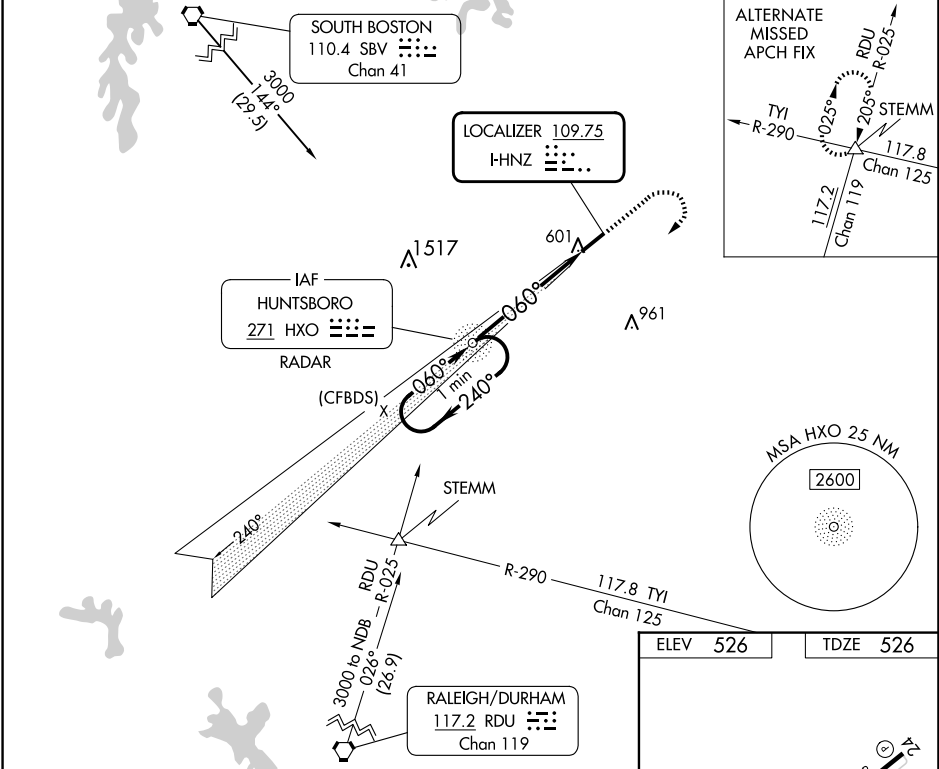
ADF or RADAR required. ADF or RADAR required for procedure entry.

**▼** Rwy 6 helicopter visibility reduction below 3/4 SM NA. When local altimeter setting not received, use Roxboro altimeter setting and increase all MDA 80 feet; increase S-6 Cat C/D visibility 1/2 SM and Circling Cat C and D visibility 1/4 SM.

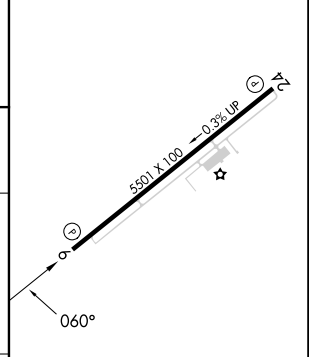
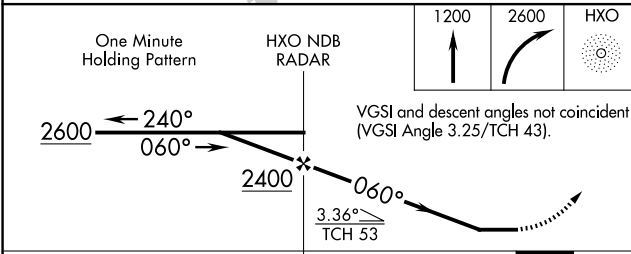
**▲** Cat C/D visibility 1/2 SM and Circling Cat C and D visibility 1/4 SM.

MISSED APPROACH: Climb to 1200 then climbing right turn to 2600 direct HXO NDB/RADAR and hold.

AWOS-3 <b>118.625</b>	RALEIGH APP CON <b>132.35 256.9</b>	UNICOM <b>122.8(CTAF) 0</b>
--------------------------	--	--------------------------------



ELEV 526	TDZE 526
----------	----------



CATEGORY	A	B	C	D
S-6	980-1	454 (500-1)	980-1 3/8	454 (500-1 3/8)
<b>C</b> CIRCLING	980-1	454 (500-1)	1100-1 1/2 574 (600-1 1/2)	1280-2 1/2 754 (800-2 1/2)

REIL Rwy 6 0					
MIRL Rwy 6-24 0					
FAF to MAP 5.2 NM					
Knots	60	90	120	150	180
Min:Sec	5:12	3:28	2:36	2:05	1:44

SE-2, 04 SEP 2025 to 02 OCT 2025

SE-2, 04 SEP 2025 to 02 OCT 2025