

RNAV (GPS) RWY 9

VINTON VETERANS MEML AIRPARK (VTI)

APP CRS **091°**
Rwy Ldg **4000**
TDZE **836**
Apt Elev **842**

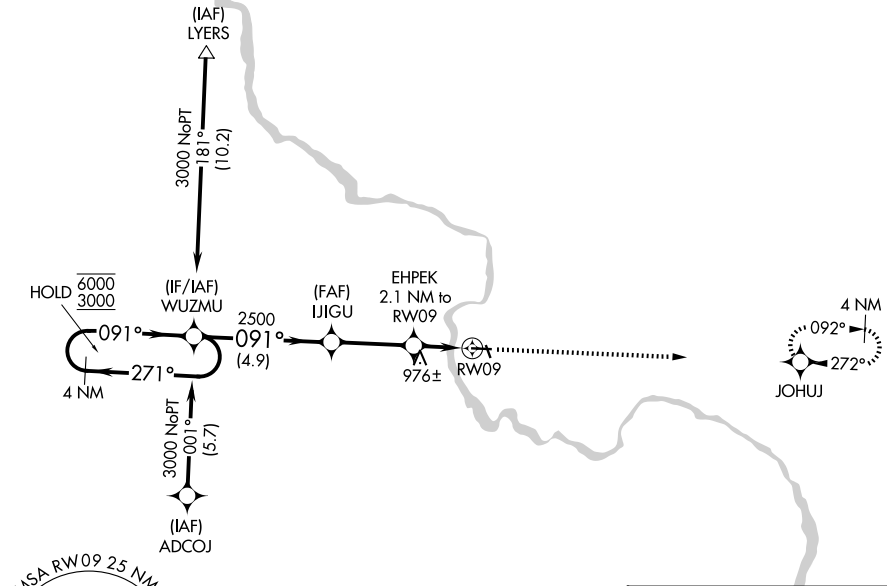
RNP APCH - GPS.
▼ Rwy 9 helicopter visibility reduction below 3/4 SM NA. VDP NA when using IIB altimeter setting. When local altimeter setting not received, use IIB altimeter setting and increase all MDA 60 feet.

MISSED APPROACH: Climb to 3000 direct JOHUJ and hold.

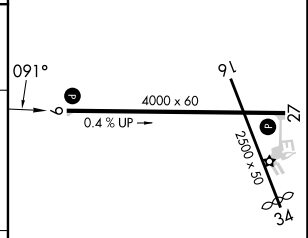
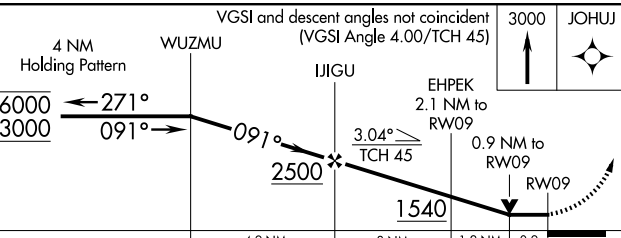
AWOS-3
120.075

CEDAR RAPIDS APP CON ★
134.05 266.8

UNICOM
122.8 (CTAF)



ELEV 842 TDZE 836



CATEGORY	A	B	C	D
LNVA MDA	1260-1	424 (500-1)	NA	
CIRCLING	1320-1 478 (500-1)	1360-1 518 (600-1)	NA	

REIL Rwy 9 and 27
MIRL Rwy 9-27

NC-3, 04 SEP 2025 to 02 OCT 2025

NC-3, 04 SEP 2025 to 02 OCT 2025