

APP CRS <b>061°</b>	Rwy Ldg TDZE Apt Elev	<b>5100</b> <b>3426</b> <b>3426</b>
------------------------	-----------------------------	---

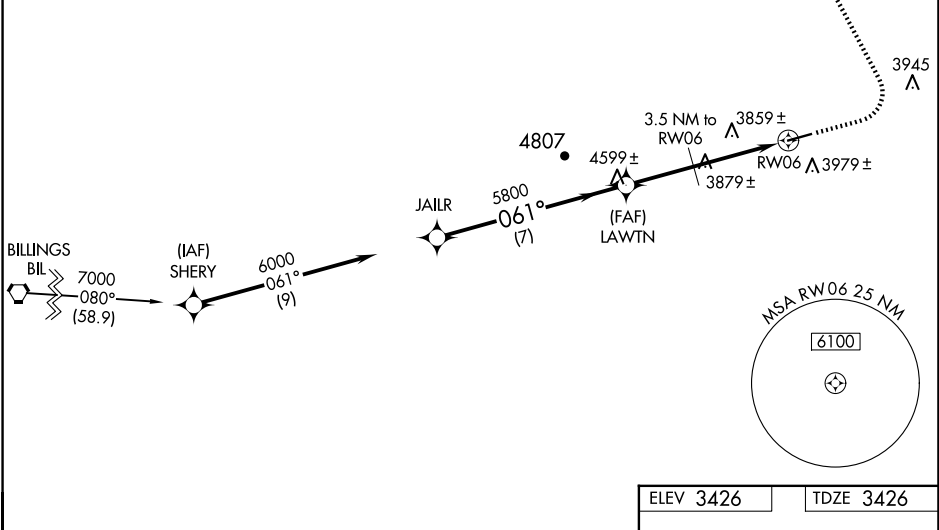
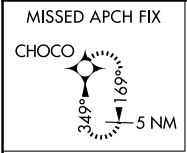
# GPS RWY 6

COLSTRIP (M46)

**NA** When local altimeter not received use Miles City altimeter setting.  
**-34°C** Helicopter visibility reduction below 3/4 SM NA.

**MISSED APPROACH:** Climb to 4500 then climbing left turn to 6000 direct CHOCO WP and hold.

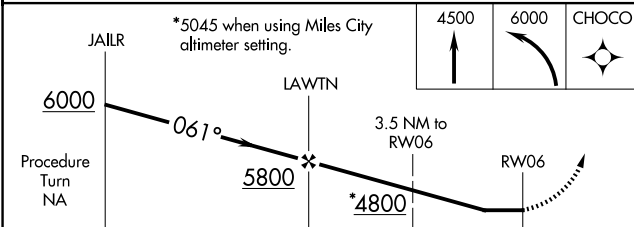
AWOS-3PT <b>118.525</b>	SALT LAKE CENTER <b>126.85 305.2</b>	UNICOM <b>122.7 (CTAF) 0</b>
----------------------------	---	---------------------------------



NW-1, 04 SEP 2025 to 02 OCT 2025

NW-1, 04 SEP 2025 to 02 OCT 2025

ELEV 3426	TDZE 3426
-----------	-----------



CATEGORY	A	B	C	D
S-6	4220-1 794 (800-1)	4220-1 1/4 794 (800-1 1/4)	4220-2 1/4 794 (800-2 1/4)	NA
CIRCLING	4340-1 1/4	914 (1000-1 1/4)	4340-2 3/4 914 (1000-2 3/4)	NA
MILES CITY ALTIMETER SETTING				
S-6	NA			
CIRCLING	4580-1 1/4 1154 (1200-1 1/4)	4580-1 1/2 1154 (1200-1 1/2)	4580-3 1154 (1200-3)	NA

