

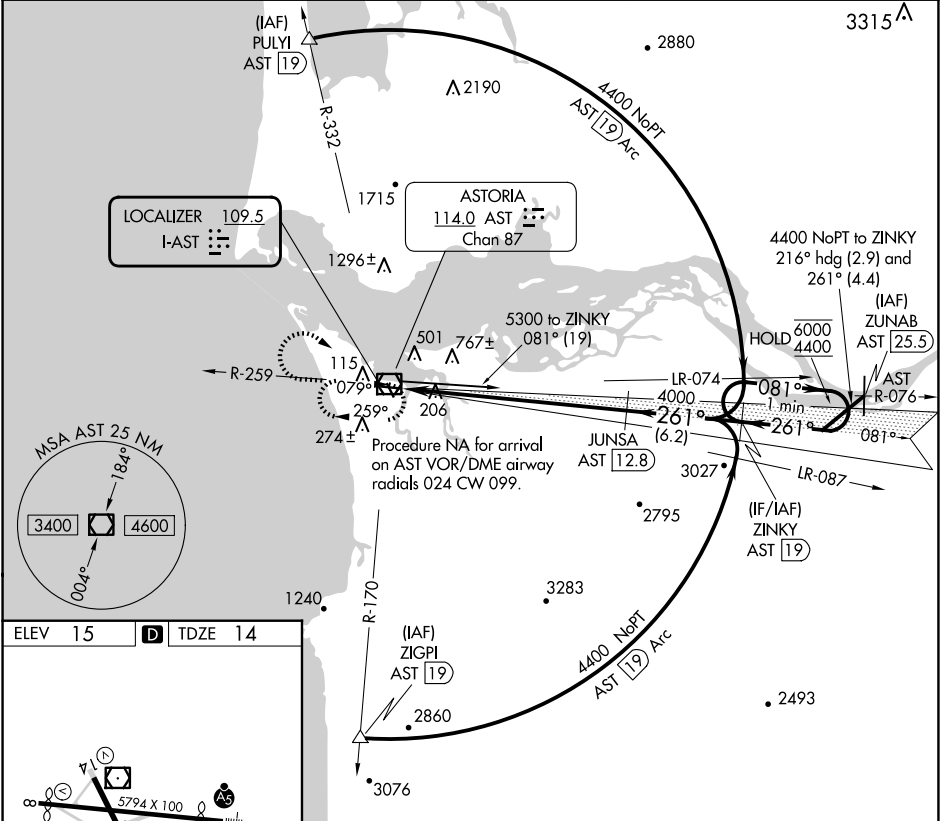
LOC I-AST 109.5	APP CRS 261°	Rwy Ldg TDZE Apt Elev	4780 14 15
---------------------------	------------------------	-----------------------------	---------------------------------------

ILS RWY 26

ASTORIA RGNL (AST)

DME required for procedure entry.		MALSRL 	MISSED APPROACH: Climb to 1500 then climbing right turn to 2900 direct AST VOR/DME and hold.
Rwy 26 helicopter visibility reduction below 3/4 SM NA. Inoperative table does not apply.			

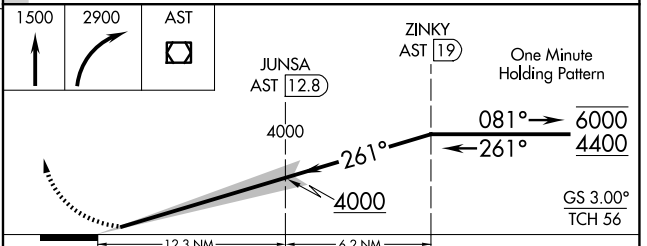
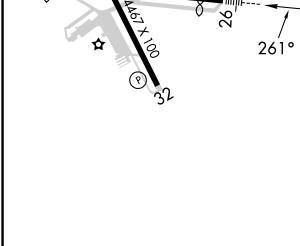
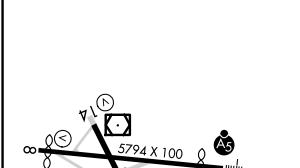
ASOS 135.375	SEATTLE CENTER 124.2 317.6	UNICOM 122.8 (CTAF) 0
------------------------	--------------------------------------	---------------------------------



NW-1, 02 OCT 2025 to 30 OCT 2025

NW-1, 02 OCT 2025 to 30 OCT 2025

ELEV 15	D	TDZE 14
---------	----------	---------



REIL Rwy 8	REIL Rwy 14	MIRL Rwy 8-26 and 14-32		
CATEGORY	A	B	C	D
S-ILS 26	264-1 250 (300-1)			