

FORT WORTH, TEXAS

# RNAV (GPS) RWY 36

FORT WORTH NAS JRB (CARSWELL FLD) (KNFW)

WAAS CH <b>49487</b> <b>W36A</b>	APCH CRS <b>357°</b>	Rwy Idg <b>11,999</b> TDZE <b>650</b> Arprt Elev <b>650</b>
--	-------------------------	---

[USN]

RNP APCH

ALS-1

MISSED APPROACH: Climb to 1700, then climbing left turn to 3000 direct HIPOL and hold.

\* When ALS inop, increase vis to ¾ mile.



ATIS* <b>351.675</b>	LONE STAR APP CON <b>125.8 257.95</b>	NAVY FORT WORTH TOWER* <b>120.950 269.325</b>	GND CON <b>121.675 279.575</b>	CLNC DEL <b>126.4 254.325</b>	ASR/ PAR
-------------------------	--	--	-----------------------------------	----------------------------------	-------------

• 1329

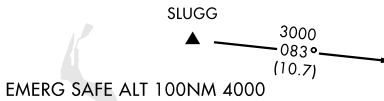
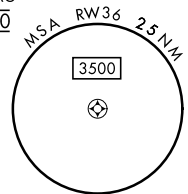
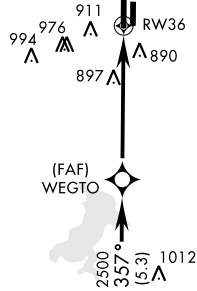
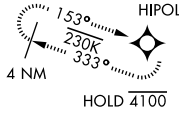
\*\* When ALS inop, increase CAT AB vis to 1 mile, CAT CD vis to 1/8 miles.

\*\*\* When ALS inop, increase vis to 1 1/8 miles, Baro VNAV NA when local altimeter not received.

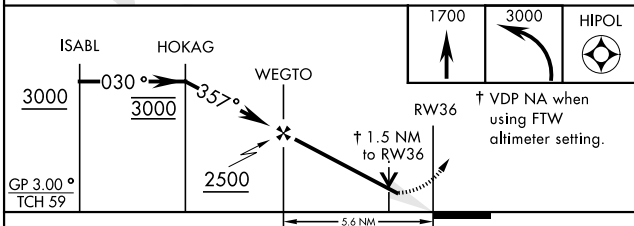
\*\*\*\* Circling not authorized E of Rwy 18-36.

When local altimeter is not received use Fort Worth Meacham altimeter setting.

For uncompensated BaroVNAV systems, LNAV/VNAV NA below -16°C (4°F) or above 54°C (129°F).



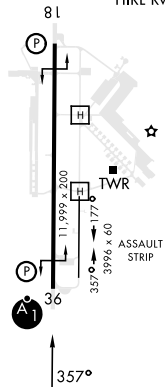
EMERG SAFE ALT 100NM 4000



ELEV	650	TDZE	650
------	-----	------	-----

REIL Rwy 18  
HIRL Rwy 18-36

CATEGORY	A	B	C	D
LPV DA*	850-1/2		200	(200-1/2)
LNAV MDA**	1200-1/2	550 (600-1/2)	1200-1/8	550 (600-1/8)
LNAV/VNAV DA***	1195-1/8		545	(600-1/8)
CIRCLING****	1220-1 570 (600-1)	1320-1 670 (700-1)	1320-1 3/4 670 (700-1 3/4)	1340-2 1/4 690 (700-2 1/4)
FORT WORTH MEACHAM ALTIMETER				
LPV DA*	870-1/2		220	(300-1/2)
LNAV MDA**	1220-1/2	570 (600-1/2)	1220-1/4	570 (600-1/4)
CIRCLING****	1240-1 590 (600-1)	1340-1 690 (700-1)	1340-2 690 (700-2)	1360-2 1/4 710 (800-2 1/4)



FORT WORTH, TEXAS

32°46'N-97°26'W

FORT WORTH NAS JRB (CARSWELL FLD) (KNFW)

Amdt 2 18MAY23

# RNAV (GPS) RWY 36

SC-2, 02 OCT 2025 to 30 OCT 2025

SC-2, 02 OCT 2025 to 30 OCT 2025