

LOC/DME I-IAC <b>110.5</b> Chan <b>42</b>	APP CRS <b>273°</b>	Rwy Ldg <b>11260</b> TDZE <b>654</b> Apt Elev <b>680</b>
---	------------------------	--

# ILS RWY 27L (SA CAT I)

CHICAGO O'HARE INTL (ORD)

RNP APCH-GPS from VOGLR.

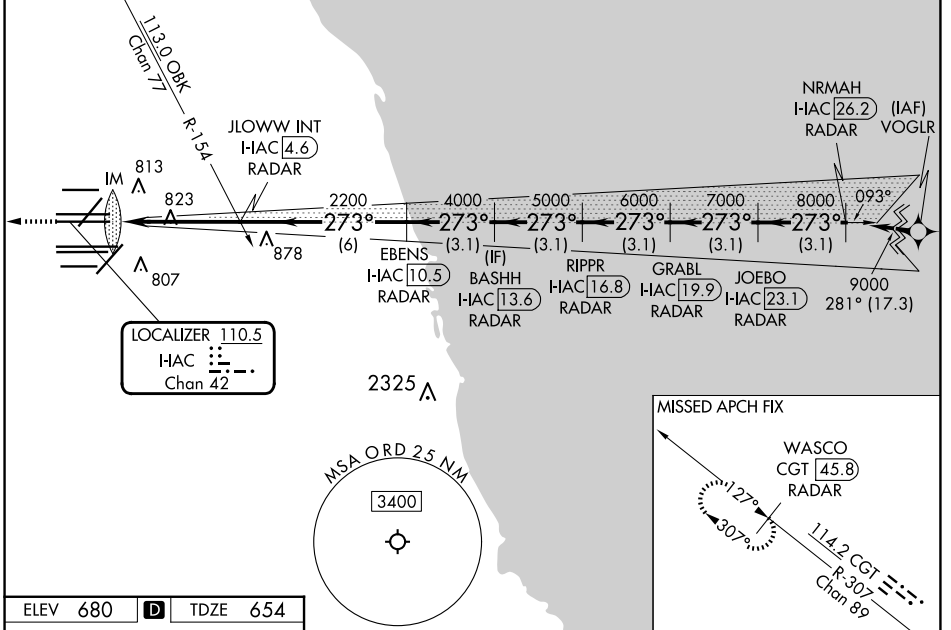
Aircraft not GPS equipped - RADAR required for procedure entry. DME or RADAR required.

ALSIF-2

MISSED APPROACH: Climb to 1200 then climb to 4000 on heading 265° and on CGT VORTAC R-307 to WASCO/CGT 45.8 DME/RADAR and hold.

Simultaneous approach authorized. Requires specific OPSPEC, MSPEC, or LOA approval.

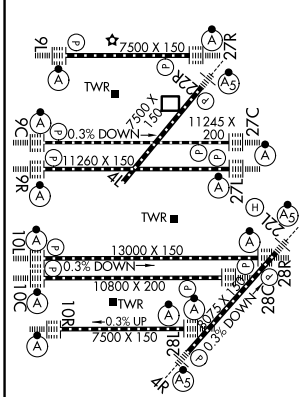
D-ATIS <b>135.4</b> <b>282.225</b>	CHICAGO APP CON <b>119.0 292.125</b>	O'HARE TOWER <b>126.9 348.0</b>	GND CON (TWR CENTER) <b>124.125</b> (TWR NORTH) <b>118.05</b> (TWR SOUTH) <b>226.675</b> (ALL TWRs)	<b>121.75</b> (OBND) <b>121.9</b> (IBND)	CLNC DEL <b>121.6</b>	CPDLC
--	---	------------------------------------	--	---	--------------------------	-------



EC-3, 02 OCT 2025 to 30 OCT 2025

EC-3, 02 OCT 2025 to 30 OCT 2025

ELEV 680	<b>D</b>	TDZE 654
----------	----------	----------



1200	4000	CGT R-307	WASCO CGT 45.8 RADAR	VGSI and ILS glidepath not coincident (VGSI Angle 3.00/TCH 77).			
hdg 265°		JLOWW INT I-IAC 4.6 RADAR	BASHH I-IAC 13.6 RADAR	GRABL I-IAC 19.9 RADAR	NRMAH I-IAC 26.2 RADAR		
		EBENS I-IAC 10.5 RADAR	RIPPR I-IAC 16.8 RADAR	JOEBO I-IAC 23.1 RADAR			
		IM	2200	4000	5000	6000	7000
		273°	8000	9000			
		GS 3.00° TCH 57					
CATEGORY	A	B	C	D			
S-ILS 27L	RA 165/14		150 DA 804				

**SA CATEGORY I ILS - SPECIAL AIRCREW & AIRCRAFT CERTIFICATION REQUIRED**