

LOC/DME I-SXH 108.95 Chan 26(Y)	APP CRS 093°	Rwy Ldg 10540 TDZE 669 Apt Elev 680
--	------------------------	--

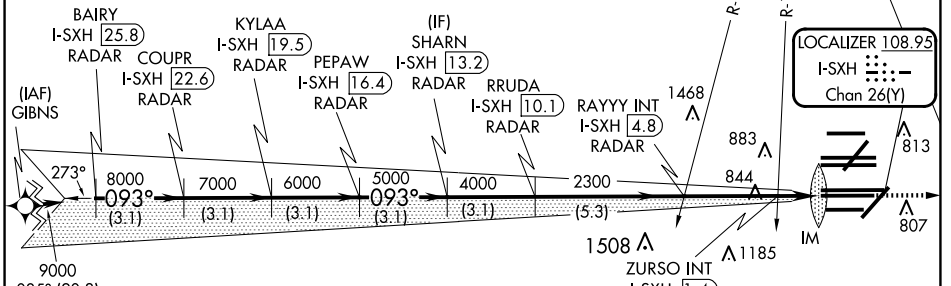
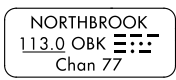
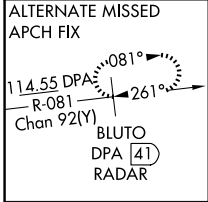
ILS or LOC RWY 10C

CHICAGO O'HARE INTL (ORD)

From GIBNS: RNAV-1 GPS required.
 RNAV 1-GPS or RADAR required for procedure entry. DME or RADAR required.
 Simultaneous approach authorized.

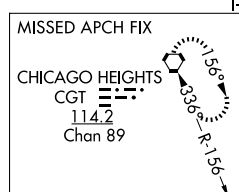
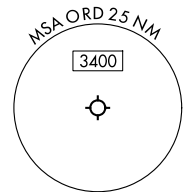
ALSf-2
 MISSED APPROACH: Climb to 4000 on heading 093° and CGT VORTAC R-336 to CGT VORTAC and hold.

D-ATIS 135.4 282.225	CHICAGO APP CON 119.0 292.125	O'HARE TOWER 120.75 348.0	GND CON (TWR CENTER) 124.125 (TWR NORTH) 118.05 (TWR SOUTH) 226.675 (ALL TWRs)	(TWR CENTER) 121.75 (OBND) 121.9 (IBND)	CLNC DEL 121.6	CPDLC
--	---	-------------------------------------	--	---	--------------------------	-------



EC-3, 02 OCT 2025 to 30 OCT 2025

EC-3, 02 OCT 2025 to 30 OCT 2025



BAIRY I-SXH 25.8 RADAR	VGSi and ILS glidepath not coincident KYLAA (VGSi Angle 3.00/TCH 75).	4000	hdg 093°	CGT R-336	CGT
COUPR I-SXH 22.6 RADAR	SHARN I-SXH 13.2 RADAR	RAYYY INT I-SXH 4.8 RADAR	* LOC only		
9000	PEPAW I-SXH 16.4 RADAR	RRUDA I-SXH 10.1 RADAR	ZURSO INT I-SXH 1.4	I-SXH DME ANTENNA	I-SXH 0.2
8000	7000	6000	5000	4000	2300
3.1 NM	3.1 NM	3.1 NM	3.1 NM	3.1 NM	5.3 NM
GS 3.00° TCH 55					
* 1220					
IM					
093°					
CATEGORY	A		B		C
S-ILS 10C			869/18		200 (200-½)
S-LOC 10C	1220/24		551 (600-½)		1220/60 551 (600-1¼)
ZURSO FIX MINIMUMS (DUAL VOR RECEIVERS OR DME REQUIRED)					
S-LOC 10C	1100/24		431 (500-½)		1100/40 431 (500-¾)

