


VORTAC SGF 116.9 Chan 116	APP CRS 016°	Rwy Ldg TDZE Apt Elev	7003 1265 1268
---	------------------------	-----------------------------	---

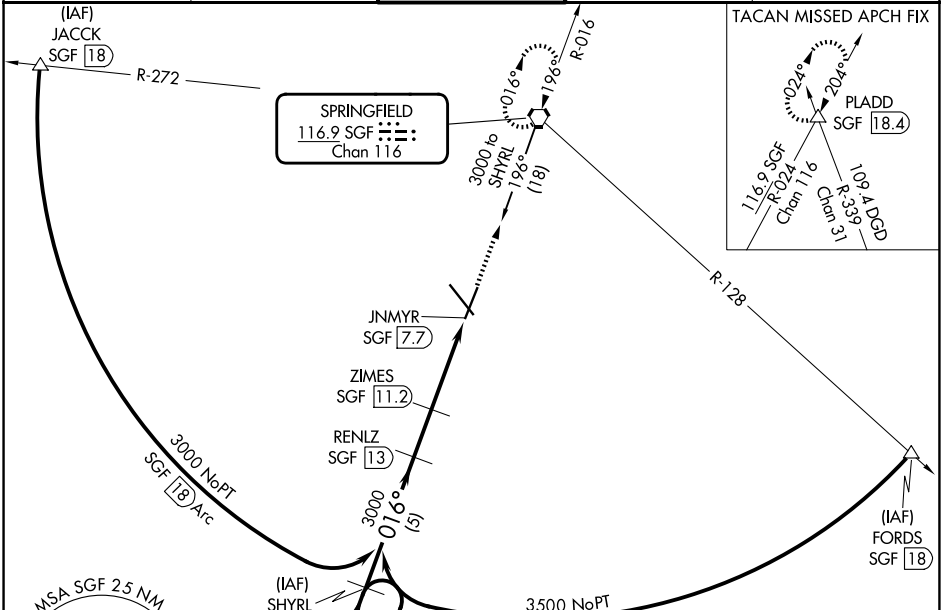
VOR/DME or TACAN RWY 2

SPRINGFIELD-BRANSON NTL (SGF)

▼ For inoperative MALSR, increase S-2 Cat A and B visibility to RVR 5000 and Cat E to 1½. When local altimeter setting not received, use Monett altimeter setting and increase all MDA 100 feet, increase Circling Cat C to 1¾ mile. VDP NA when using Monett altimeter setting.

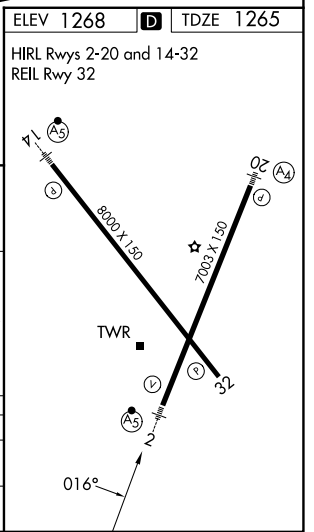
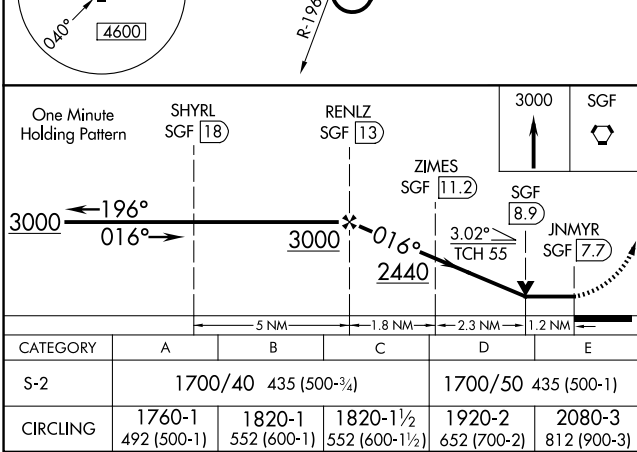
MALSR  MISSED APPROACH: Climb to 3000 direct SGF VORTAC and hold (TACAN Aircraft continue on SGF R-024 to PLADD INT/SGF 18.4 DME and hold, north, right turns, 204° inbound).

ATIS 135.125	SPRINGFIELD APP CON 124.95 290.5	SPRINGFIELD TOWER 119.9 257.8	GND CON 121.9 251.15	CLNC DEL 123.675
------------------------	--	---	--------------------------------	----------------------------



ELEV 1268	D	TDZE 1265
-----------	----------	-----------

HIRL Rwy 2-20 and 14-32
REL Rwy 32



CATEGORY	A	B	C	D	E
S-2	1700/40	435 (500-¾)		1700/50	435 (500-1)
CIRCLING	1760-1 492 (500-1)	1820-1 552 (600-1)	1820-1½ 552 (600-1½)	1920-2 652 (700-2)	2080-3 812 (900-3)

NC-3, 02 OCT 2025 to 30 OCT 2025

NC-3, 02 OCT 2025 to 30 OCT 2025