

| | | |
|---|------------------------|--|
| LOC/DME I-C/JN 110.75 Chan 44 (Y) | APP CRS 186° | Rwy Ldg 8000 TDZE 868 Apt Elev 896 |
|---|------------------------|--|

ILS or LOC RWY 18R

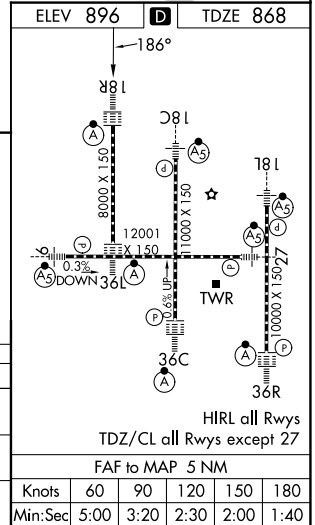
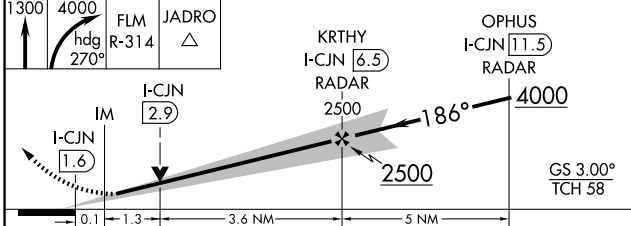
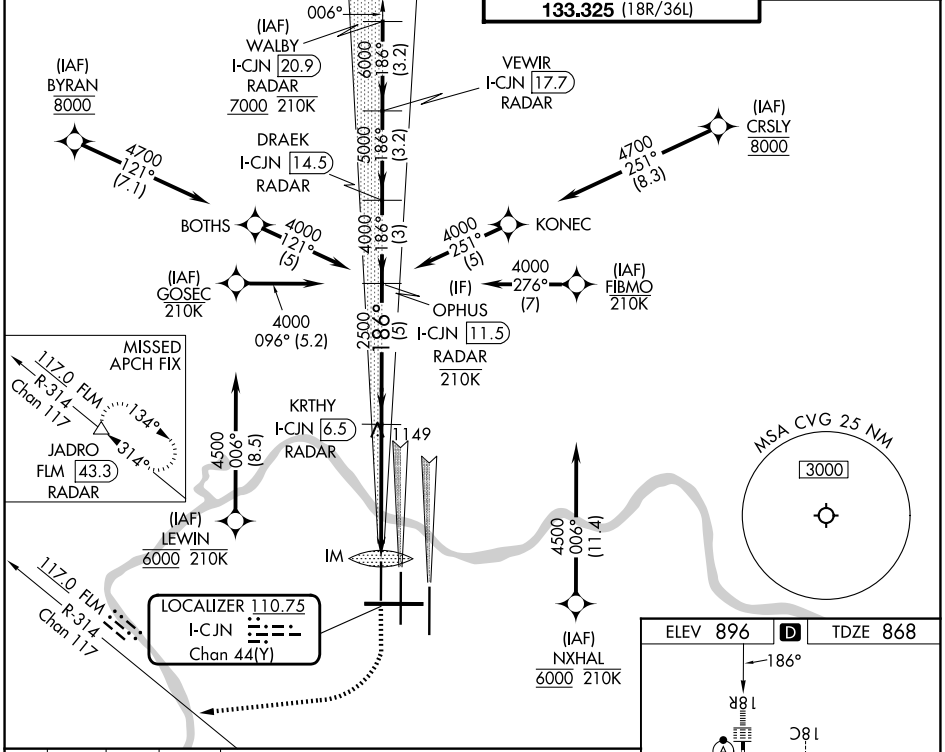
CINCINNATI/NORTHERN KENTUCKY INTL (CVG)

RNP APCH - GPS. From BYRAN, CRSLY, GOSEC, FIBMO, LEWIN and NXHAL.
DME or RADAR required. RADAR required for procedure entry at WALBY.
For inop ALS, increase S-LOC 18R Cat C/D visibility to 1 $\frac{1}{2}$ SM.
Simultaneous approach authorized with Rwy 18L/C. Use of FD or AP required during simultaneous operations.



MISSED APPROACH: Climb to 1300 then climbing right turn to 4000 on heading 270° and FLM VOR/DME R-314 to JADRO/FLM 43.3 DME/RADAR and hold.

| | | | |
|--------------------------|--|---|-------------------------|
| D-ATIS 134.375 | CINCINNATI APP CON 119.7 363.15 (090°-269°) 123.875 363.15 (270°-089°) | CINCINNATI TOWER 118.975 360.85 (18L/36R) 118.3 (9/27, 18C/36C) 133.325 (18R/36L) | GND CON 121.7 |
|--------------------------|--|---|-------------------------|



| CATEGORY | A | B | C | D |
|-----------|-----------------------------------|---------------------------|--|-----------------------|
| S-ILS 18R | 1068/18 200 (200- $\frac{1}{2}$) | | | |
| S-LOC 18R | 1360/24 | 492 (500- $\frac{1}{2}$) | 1360/50 | 492 (500-1) |
| CIRCLING | 1460-1 | 564 (600-1) | 1560-1 $\frac{3}{4}$ 664 (700-1 $\frac{3}{4}$) | 1560-2 664 (700-2) |

| | | | | | |
|--|------|------|------|------|------|
| HRTL all Rvys TDZ/CL all Rvys except 27 | | | | | |
| FAF to MAP 5 NM | | | | | |
| Knots | 60 | 90 | 120 | 150 | 180 |
| Min:Sec | 5:00 | 3:20 | 2:30 | 2:00 | 1:40 |

SE-1, 02 OCT 2025 to 30 OCT 2025

SE-1, 02 OCT 2025 to 30 OCT 2025