

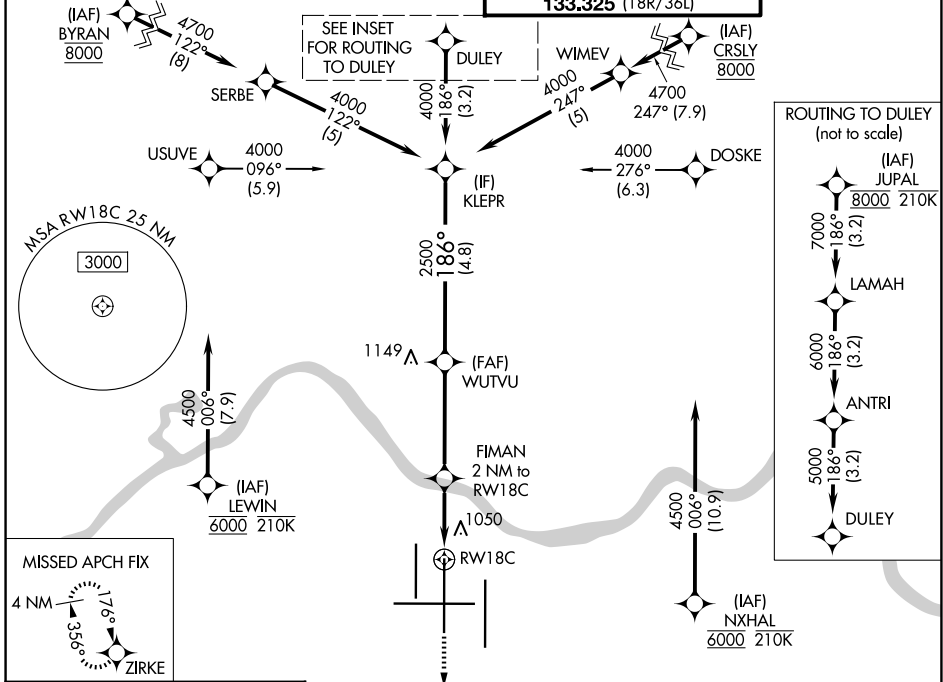
WAAS CH <b>86803</b> <b>W18B</b>	APP CRS <b>186°</b>	Rwy Ldg <b>11000</b> TDZE <b>875</b> Apt Elev <b>896</b>
--	------------------------	--

# RNAV (GPS) Y RWY 18C

CINCINNATI/NORTHERN KENTUCKY INTL (CVG)

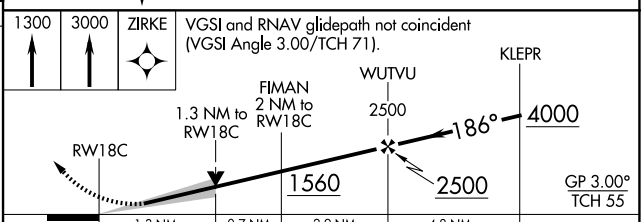
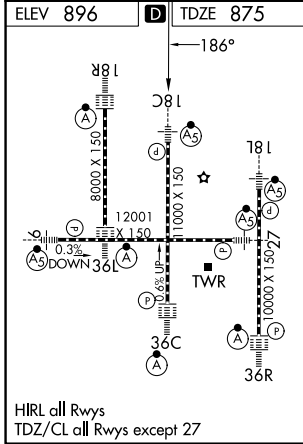
RNP APCH - GPS. ▼ For uncompensated Baro-VNAV systems, LNAV/VNAV NA below -14°C or above 54°C. Simultaneous approach authorized with Rwy 18L/R. LNAV procedure NA during simultaneous operations. Use of FD or AP required during simultaneous operations. For inop ALS, increase LNAV Cat C/D visibility to 1½ SM.	MALSR 	MISSED APPROACH: Climb to 1300, then climb to 3000 direct ZIRKE and hold.
--	-----------	---

D-ATIS <b>134.375</b>	CINCINNATI APP CON <b>119.7 363.15</b> (090°-269°) <b>123.875 363.15</b> (270°-089°)	CINCINNATI TOWER <b>118.975 360.85</b> (18L/36R) <b>118.3</b> (9/27, 18C/36C) <b>133.325</b> (18R/36L)	GND CON <b>121.7</b>
--------------------------	--	---	-------------------------



SE-1, 02 OCT 2025 to 30 OCT 2025

SE-1, 02 OCT 2025 to 30 OCT 2025



CATEGORY	A	B	C	D
LPV DA		1075/18	200 (200-½)	
LNAV/VNAV DA		1398/55	523 (600-1)	
LNAV MDA	1360/24	485 (500-½)	1360/50	485 (500-1)
CIRCLING	1460-1	564 (600-1)	1560-1¾ 664 (700-1¾)	1560-2 664 (700-2)