

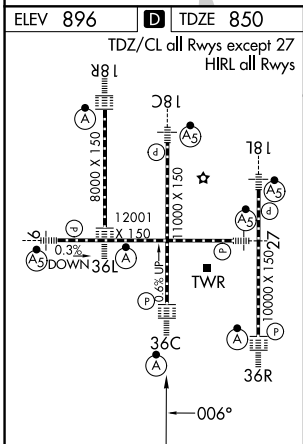
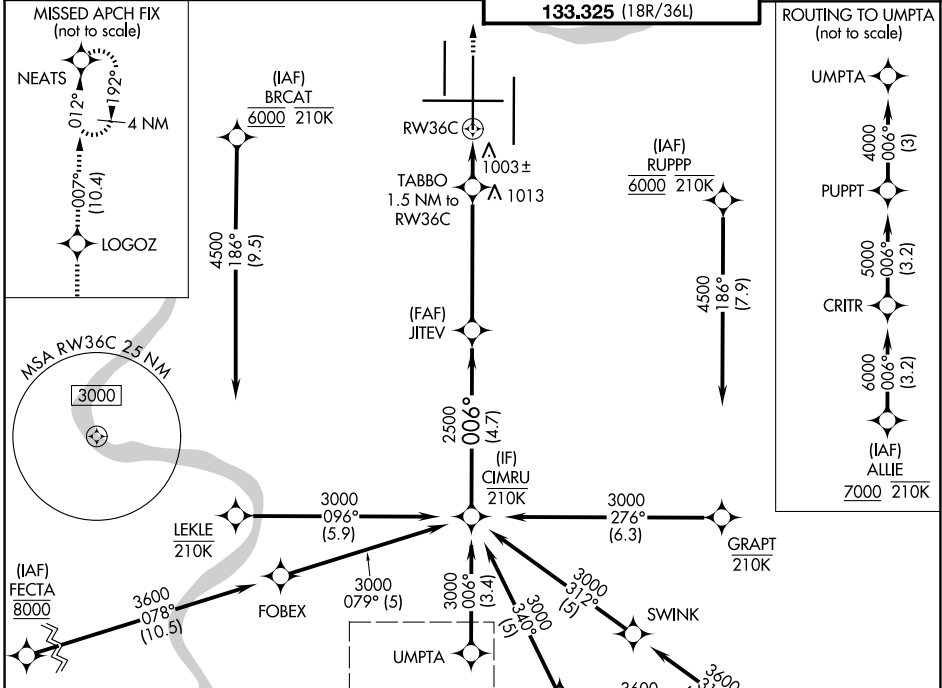
WAAS CH 97609 W36B	APP CRS 006°	Rwy Ldg 11000 TDZE 850 Apt Elev 896
--	------------------------	--

RNAV (GPS) Y RWY 36C

CINCINNATI/NORTHERN KENTUCKY INTL (CVG)

RNP APCH - GPS. ▼ For uncompensated Baro-VNAV systems, LNAV/VNAV NA below -14°C or above 54°C. Use of FD or AP required during simultaneous operations. Simultaneous approach authorized. LNAV procedure NA during simultaneous operations. For inop ALS, increase LNAV/VNAV visibility all Cats and LNAV Cat C and D visibility to RVR 6000.	ALSF-2 	MISSED APPROACH: Climb to 3000 direct LOGOZ and on track 007° to NEATS and hold.
--	------------	--

D-ATIS 134.375	CINCINNATI APP CON 119.7 363.15 (090°-269°) 123.875 363.15 (270°-089°)	CINCINNATI TOWER 118.975 360.85 (18L/36R) 118.3 (9/27, 18C/36C) 133.325 (18R/36L)	GND CON 121.7
--------------------------	--	---	-------------------------



VGSI and RNAV glidepath not coincident (VGSI Angle 3.00/TCH 77).

CIMRU 3000
JITEV 2500
TABBO 1.5 NM to RWY 36C
RWY 36C

GP 3.00°
TCH 52

4.7 NM
3.6 NM
1.5 NM

CATEGORY	A	B	C	D
LPV DA		1050/18	200 (200-½)	
LNAV/VNAV DA		1260/40	410 (400-¾)	
LNAV MDA	1260/24	410 (400-½)	1260/40	410 (400-¾)
CIRCLING	1460-1	564 (600-1)	1560-1¾ 664 (700-1¾)	1560-2 664 (700-2)

SE-1, 02 OCT 2025 to 30 OCT 2025

SE-1, 02 OCT 2025 to 30 OCT 2025